



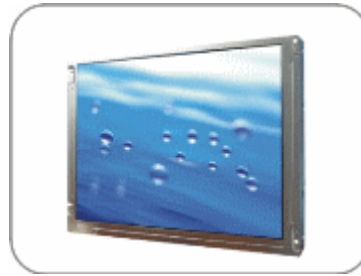
OLF1055 / OLH1055

10.4" AOT LCD, LED Backlight 800nits,XGA

10.4" AOT panel, built-in 800 nits high bright and advanced optical bonding technology (AOT). Utilizing AOT technology; OLF/OLH displays overcome optical challenges for the LCD user. In a wide assortment of applications, high ambient lighting conditions result in a "washed out" display. Commercially available LCD displays do not offer enough brightness to make the display truly readable or in other high ambient light environment. The exclusive glass bonding process from Litemax results in a reduction of ambient light reflections truly tops out any other display enhancement technologies. Suitable for military, tablet, ruggedized PC, kiosk, advertising, POS, marline, transportation, gaming, gas pump.

Key Features

- Sunlight Readable
- Enhance Contrast Ratio, Reduce Reflection
- LED Backlight
- High Shock
- Vandal-Proof, Vibration Absorbed
- Against All Weather, no Foggy Screen
- Low Power Consumption
- Wide Temperature. Range (-20°C~60°C)
- Wide Dimming
- Life Expectancy (70,000hrs)



Specifications

V1

Model No.	OLF1055	OLH1055
Description	10.4" AOT LCD, LED Backlight 800nits,XGA	
Display Area (mm)	210.4 x 157.8 mm	
Brightness	800 cd/m ²	
Resolution	1024 x 768 (XGA)	
Contrast Ratio	1200 : 1	
Pixel Pitch (mm)	0.0685(H) x 0.2055(V)	
Viewing Angle	+88°~-88°(H), +88°~-88°(V)	
Display Colors	16.7M	
Response Time (Typical)	40ms (Typical)	
Sync	LVDS	
Power Consumption	16.7W	
Dimensions (mm)	248.92x186.92x12.8	
Weight (Net)	650g	
LED Driving Board	LID 12A	
Control Board (Optional)	<input type="checkbox"/> AD5621GA <input type="checkbox"/> AD5621GD <input type="checkbox"/> AD5766GDVA <input type="checkbox"/> AD2662GDVAR	
	<input type="checkbox"/> AD5621GA	VGA + Audio
	<input type="checkbox"/> AD5621GD	VGA+DVI
	<input type="checkbox"/> AD5766GDVA	VGA+CVBS+S-Video+Audio (Optional DVI / Component)
	<input type="checkbox"/> AD2662GDVAR	VGA+DVI (Optional S-Video/ Component / Audio)
F / R Control Button	<input type="checkbox"/> 5 Key <input type="checkbox"/> 4 Key	
	<input type="checkbox"/> 5 Key	Power Switch, Menu, Select (+,-), Auto
	<input type="checkbox"/> 4 Key	Power Switch, Menu, Select (+,-),
OSD Menu	Brightness, Contrast, H/V Position, Color, Phase, Clock...	
Optional	<input type="checkbox"/> Touch Screen	

Specifications are subject to change without notice.

All brands or product names are trademarks or registered trademarks of their respective companies.

OLF= AOT Panel+ LED Driving Board

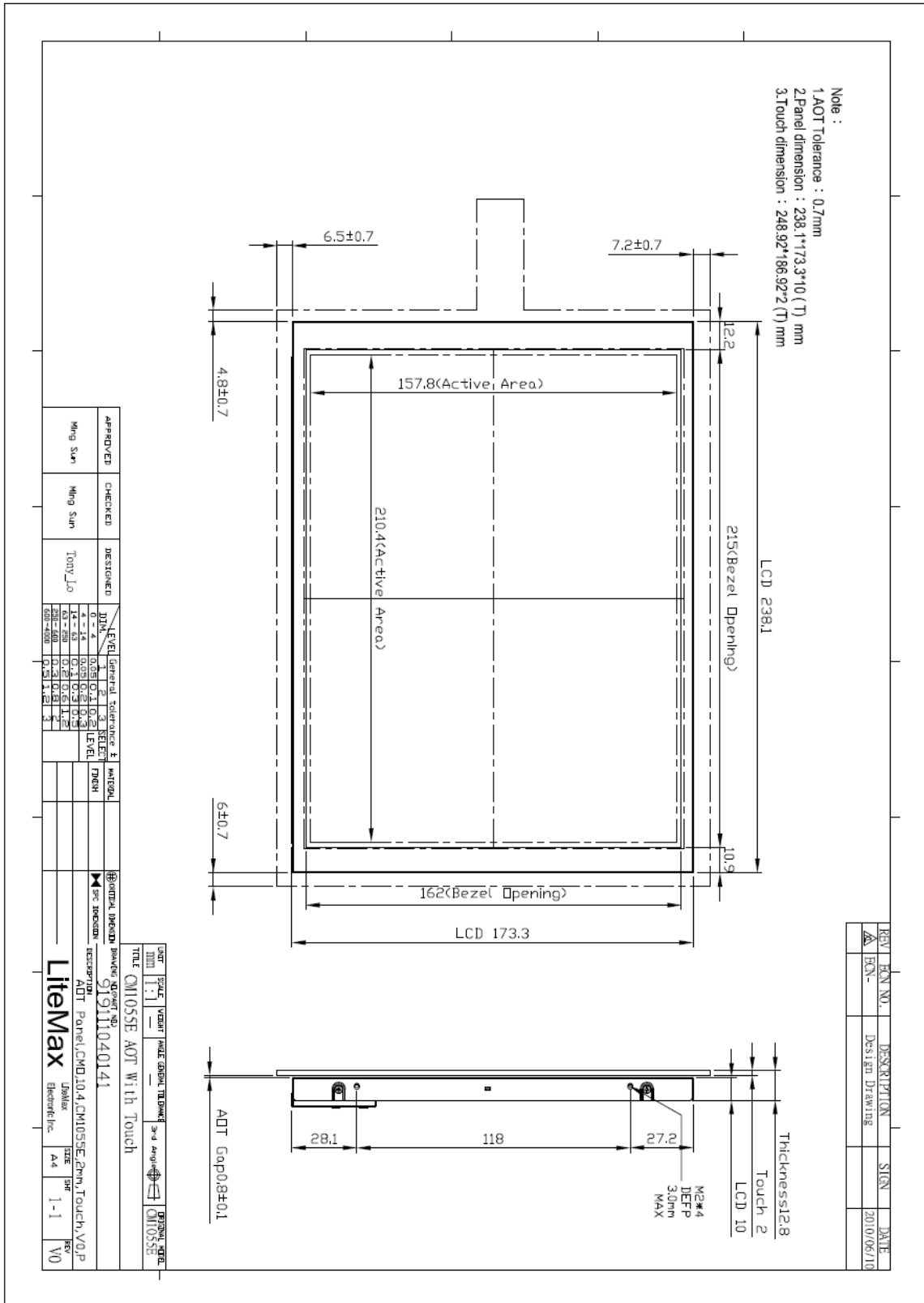
OLH= AOT Panel+ LED Driving Board+ Control Board



Mechanical Drawing

Outline Dimensions

Unit:mm





Ordering Information

Part Number	Description
OLF1055-ETN-A01	10.4",800nits.XGA,T/TI-Res-5W.LID12A01,AOT-V1,V01
OLH1055-ETN-A01	10.4",1000nits,XGA,T/DN-CAP.AD5621GA,AOT-V1,V01
OLH1055-ETN-A02	10.4",1000nits,XGA.T/LY-R-5W-rs232.(Transparency:80%).w/AMT control board.AD5621GA,AOT,V01

Optional Accessories

Part Number	Description
840612051100	ADAPTER.12V.5A.60W.EA1050A,P
810618301010	CABLE.POWER.AC.1830mm USA type
810618301090	CABLE,POWER,AC,1830mm Europe type
810618301050	CABLE.POWER.AC.1830mm UK type
810618301170	CABLE.POWER,AC,1830mm Australia type
810618301030	CABLE.POWER.AC.1830mm Japan type