

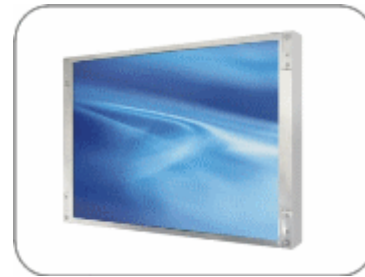


**OLF1236 / OLH1236**  
**12.1" TFT LCD, LED Backlight 1000nits,XGA**

12.1" AOT panel, built-in 1000 nits high bright and advanced optical bonding technology (AOT). Utilizing AOT technology; OLF/OLH displays overcome optical challenges for the LCD user. In a wide assortment of applications, high ambient lighting conditions result in a "washed out" display. Commercially available LCD displays do not offer enough brightness to make the display truly readable or in other high ambient light environment. The exclusive glass bonding process from Litemax results in a reduction of ambient light reflections truly tops out any other display enhancement technologies. Suitable for military, tablet, ruggedized PC, kiosk, advertising, POS, marline, transportation, gaming, gas pump.

**Key Features**

- Sunlight Readable
- Enhance Contrast Ratio, Reduce Reflection
- LED Backlight
- High Shock
- Vandal-Proof, Vibration Absorbed
- Against All Weather, no Foggy Screen
- Low Power Consumption
- Wide Temperature. Range (-30°C~70°C)
- Wide Dimming
- Life Expectancy (70,000hrs)



**Specifications**

V2

Model No.	OLF1236	OLH1236
Description	12.1" TFT LCD, LED Backlight 1000nits,XGA	
Display Area (mm)	245.8 x 184.3mm	
Brightness	1000 cd/m <sup>2</sup>	
Resolution	1024 x 768 (XGA)	
Contrast Ratio	700 : 1	
Pixel Pitch (mm)	0.24(H) x 0.24(V)	
Viewing Angle	+80°~-80°(H), +80°~-80°(V)	
Display Colors	262K	
Response Time (Typical)	25ms	
Sync	LVDS	
Power Consumption	17W	
Dimensions (mm)	278.4x211.3x16	
Weight (Net)	752g	
LED Driving Board	LID 12A02	
Control Board (Optional)	<input type="checkbox"/> AD5621GA <input type="checkbox"/> AD5621GD <input type="checkbox"/> AD5766GDVA <input type="checkbox"/> AD2662GDVAR	
<input type="checkbox"/> AD5621GA	VGA + Audio	
<input type="checkbox"/> AD5621GD	VGA+DVI	
<input type="checkbox"/> AD5766GDVA	VGA+CVBS+S-Video+Audio (Optional DVI / Component)	
<input type="checkbox"/> AD2662GDVAR	VGA+DVI (Optional S-Video/ Component / Audio)	
F / R Control Button	<input type="checkbox"/> 5 Key <input type="checkbox"/> 4 Key	
<input type="checkbox"/> 5 Key	Power Switch, Menu, Select (+,-), Auto	
<input type="checkbox"/> 4 Key	Power Switch, Menu, Select (+,-),	
OSD Menu	Brightness, Contrast, H/V Position, Color, Phase, Clock...	
Optional	<input type="checkbox"/> Touch Screen	

Specifications are subject to change without notice.

All brands or product names are trademarks or registered trademarks of their respective companies.

OLF= AOT Panel+ LED Driving Board

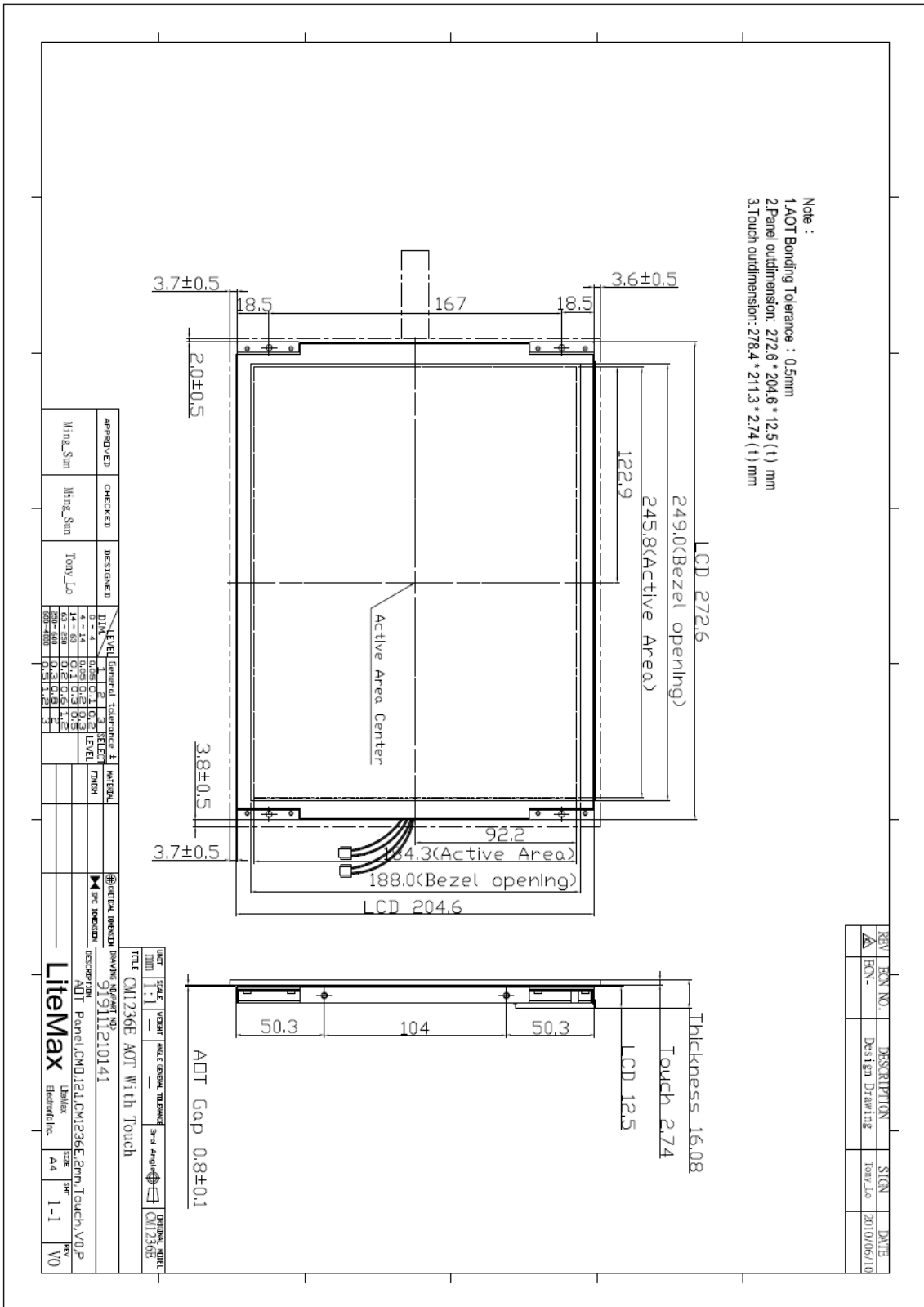
OLH= AOT Panel+ LED Driving Board+ Control Board



## Mechanical Drawing

### Outline Dimensions

Unit:mm





### Ordering Information

Part Number	Description
<b>OLF1236-ETN-A01</b>	12",1000nits,XGA,AOT.TI touch,LID12A01,V01
<b>OLF1236-ETN-A02</b>	12",1000nits,XGA.T/AMT-res-8w-consign.(Transparency:76%),LID,AOT,V01

### Optional Accessories

Part Number	Description
<b>840612051100</b>	ADAPTER.12V.5A.60W.EA1050A,P
<b>810618301010</b>	CABLE.POWER.AC.1830mm USA type
<b>810618301090</b>	CABLE,POWER,AC,1830mm Europe type
<b>810618301050</b>	CABLE.POWER.AC.1830mm UK type
<b>810618301170</b>	CABLE.POWER,AC,1830mm Australia type
<b>810618301030</b>	CABLE.POWER.AC.1830mm Japan type