

- Industrial grade components
- Long term supply
- Severe testing
- Revision control

We developed this A/D board to support industrial high brightness and commercial applications. This A/D board has many functions. It has an external luminance sensor as an option, an optional VR button to control brightness, fan rotation and thermal sensor. Rev.1 is European RoHS compliant.

**General Description**

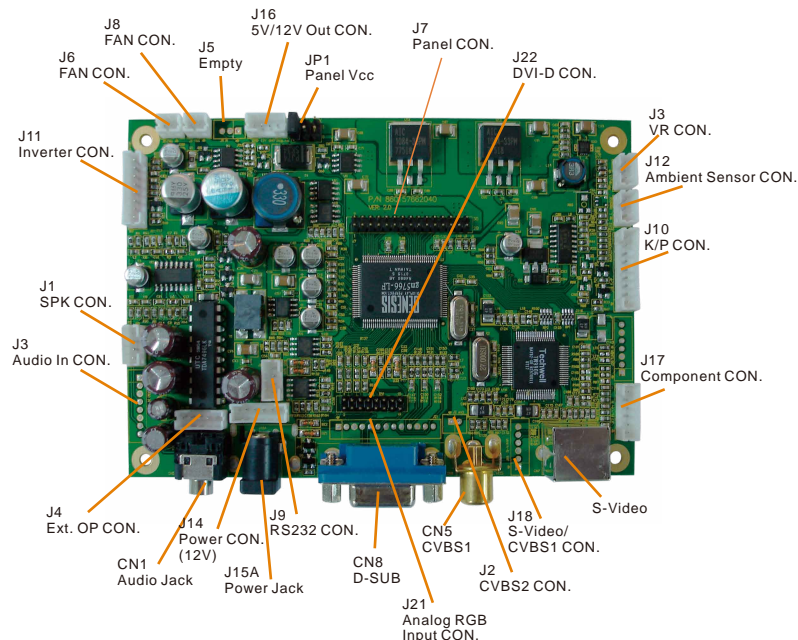
- Max Resolution Up To UXGA
- Analog RGB Input up to 205MHz
- ULTRA-RELIABLE DVI INPUT
- CBVS, S-VIDEO, \*\*YCbCr (optional) INPUT
- 1.5Wx2 Audio Out
- Dual/single LVDS interface
- Support Panel DC5V or 3.3V, 12V Output
- External Fan Control by Software
- OSD Control
- Inverter 0~5V Dimming Control
- \*External V.R. brightness control (optional)
- \*External light sensor brightness control (optional)
- \*External RS232 control (optional)
- Input Power 12VDC

Release Model: AD5766

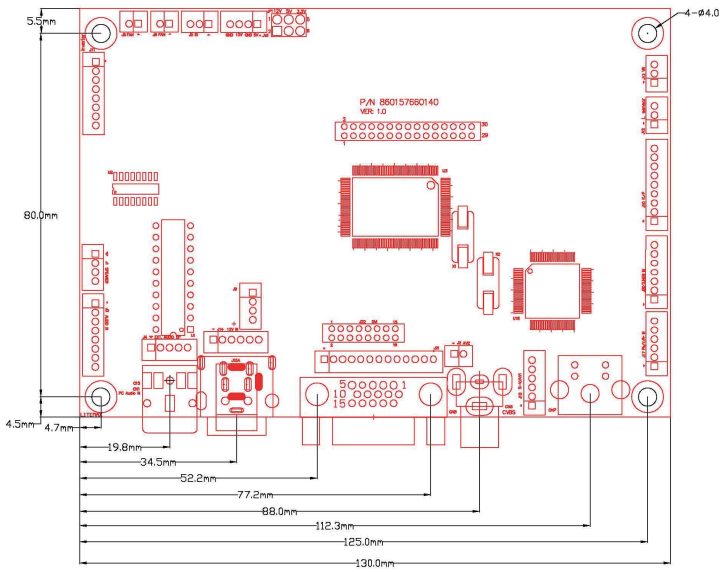
AD5766-GDVA



**AD board outline and Dimension**



# AD5766GDVA AD Board



### Supported Timing (\*by your panel resolution)

The following table displays optimum quality modes that the LCD monitor provides. If the other video modes are used, the monitor will stop working or display a poor quality picture.

TIMMING		
MODE	RESOLUTION	
VGA	640x480@60Hz	
	640x480@72Hz	
	640x480@75Hz	
SVGA	800x600@56Hz	
	800x600@60Hz	
	800x600@72Hz	
XGA	1024x768@60Hz	
	1024x768@70Hz	
	1024x768@75Hz	
SXGA	1280x1024@60Hz	
	1280x1024@70Hz	
	1280x1024@75Hz	
WXGA	1366x768@60Hz	
	SXGA+	1400x1050@60Hz(Pixel f 101.000MHz)
		1400x1050@60Hz(Pixel f 121.750MHz)
1400x1050@75Hz		
UXGA	1600x1200@60Hz	
	1600x1200@65Hz	
	1600x1200@75Hz	

**Option Parts:** 1 LVDS/TTL adaptor :this option can let you use 5766DVA to support TTL panel.



P/N:880401002020

2 Ambient light sensor :this option can let your LCD auto dimming by the ambient light .



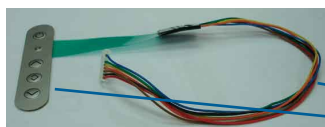
P/N:980000020010

3 VR :this option can let you turn knob to adjust the screen brightness you need.



P/N:980000040010

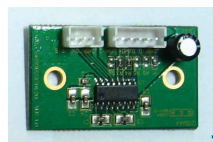
4 OSD key pad :this option can let you access the OSD (On Screen Display)menu of AD5766DVA



P/N:800302804000

P/N:481420090802

5 RS232: This option can enable you to control Brightness,Contrast,on/off via your PC



P/N:810502704000

P/N:889902320010

