



DLF1267 / DLH1267

12.1" TFT LCD, LED Backlight 1400nits,WXGA

12.1" TFT LCD panel, built-in 1400 nits high bright for sunlight readable LCD display, high transmittance color filter, high transmission polarizing plates, Low Power Consumption, suitable for kiosk, advertising, POS, marine, transportation, gaming, studio display, gas pump.

Key Features

- Sunlight Readable
- LED Backlight
- High Shock & Vibration Resistance
- Low Power Consumption
- Wide Operation Temperature
- High Uniformity (90%)
- Low EMI Noise
- Wide Dimming
- Life Expectancy (70,000hrs)



Specifications

Preliminary

Model No.	DLF1267	DLH1267
Description	12.1" TFT LCD, LED Backlight 1400 nits, WXGA	
Display Area (mm)	261.12 x 163.20	
Brightness	1,400 cd/m ²	
Resolution	1280 x 800 (WXGA)	
Contrast Ratio	600:1	
Pixel Pitch (mm)	0.204 x 0.204	
Viewing Angle	+45°~-45°(H), +20°~-40°(V)	
Display Colors	262,144 colors	
Response Time (Typical)	25 ms	
Sync	LVDS	
Power Consumption	12W	
Dimensions (mm)	277.1 x 180.8 x 6.4	
Weight (Net)	275g	
LED Driving Board	LID 12B03	
Control Board (Optional)	<input type="checkbox"/> AD5621GA <input type="checkbox"/> AD5621GD <input type="checkbox"/> AD5766GDVA <input type="checkbox"/> AD2662GDVAR	
	<input type="checkbox"/> AD5621GA	VGA+Audio
	<input type="checkbox"/> AD5621GD	VGA+DVI
	<input type="checkbox"/> AD2662GDVAR	VGA+DVI (Optional S-Video/ Component / Audio)
F / R Control Button	<input type="checkbox"/> 5 Key <input type="checkbox"/> 4 Key	
	<input type="checkbox"/> 5 Key	Power Switch, Menu, Select (+,-), Auto
	<input type="checkbox"/> 4 Key	Power Switch, Menu, Select (+,-),
OSD Menu	Brightness, Contrast, H/V Position, Color, Phase, Clock...	
Optional	<input type="checkbox"/> AOT <input type="checkbox"/> Touch Screen	

Specifications are subject to change without notice.

All brands or product names are trademarks or registered trademarks of their respective companies.

DLF= Panel+LED Driving Board

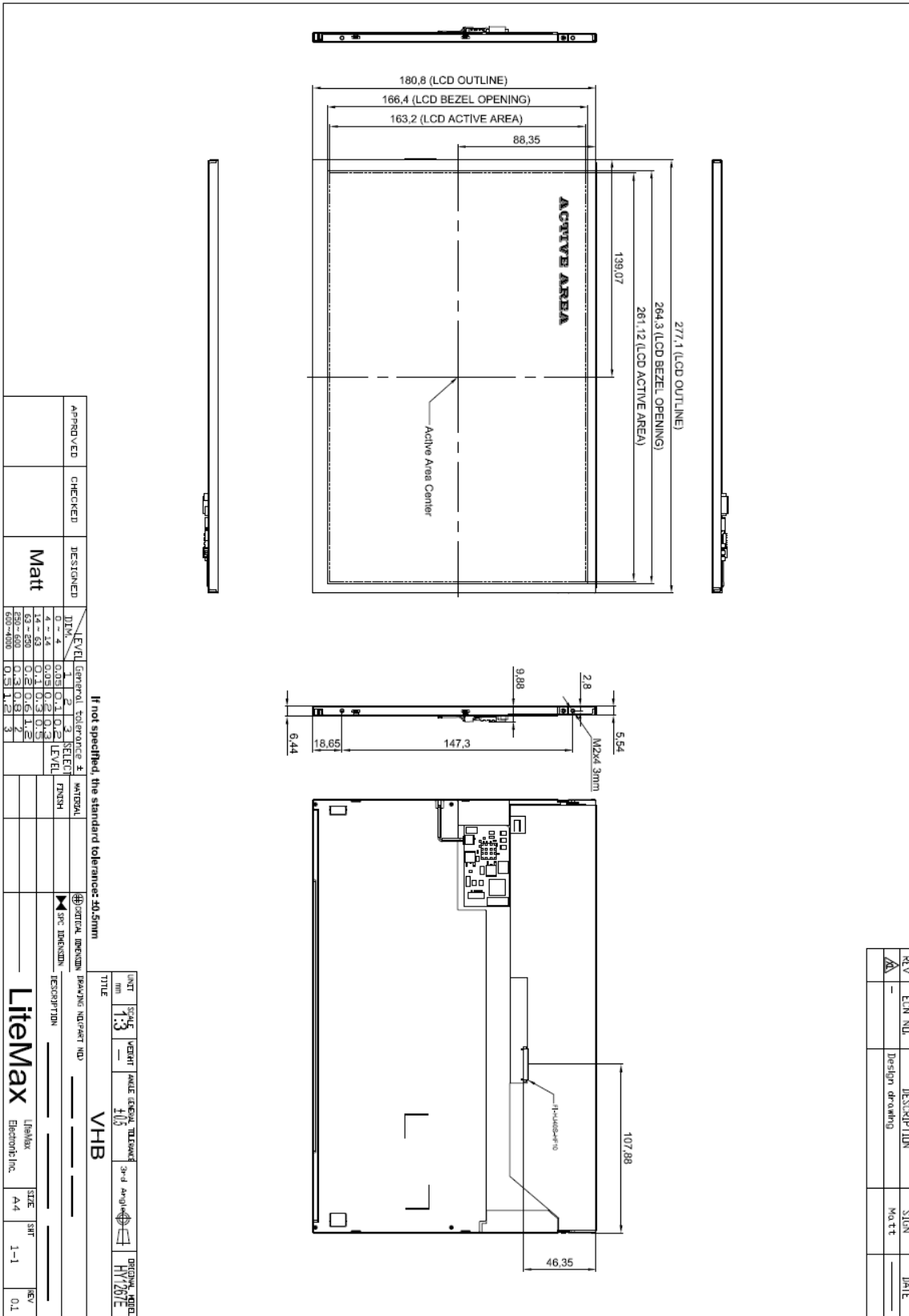
DLH= Panel+LED Driving Board+Control Board



Mechanical Drawing

Outline Dimensions

Unit:mm





Ordering Information

Model Name	Description

Optional Accessories

Part Number	Description