



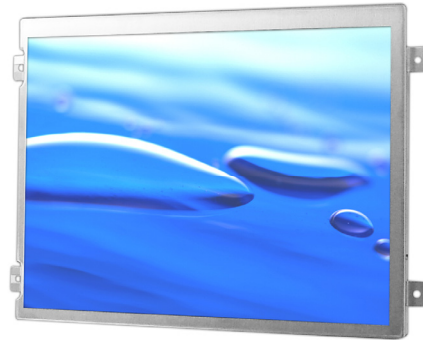
**DLF0835 / DLH0835**

**8.4" TFT LCD, LED Backlight 1000nits,SVGA**

8.4" TFT LCD panel, built-in 1000 nits high bright for sunlight readable LCD display, high transmittance color filter, high transmission polarizing plates, Low Power Consumption, suitable for kiosk, advertising, POS, marine, transportation, gaming, studio display, gas pump.

**Key Features**

- Sunlight Readable
- LED Backlight
- High Shock & Vibration Resistance
- Low Power Consumption
- Wide Operation Temp. (-30°C~80°C)
- High Uniformity (90%)
- Low EMI Noise
- Wide Dimming
- Life Expectancy (70,000hrs)



**Specifications**

V2

| Model No.                            | DLF0835  | DLH0835 |
|--------------------------------------|--|---------|
| Description                          | 8.4" TFT LCD, LED Backlight 1000nits,SVGA  |         |
| Display Area (mm)                    | 170.4x127.8 mm   |         |
| Brightness                           | 1,000 cd/m <sup>2</sup>  |         |
| Resolution                           | 800 x600 (SVGA)  |         |
| Contrast Ratio                       | 600 : 1  |         |
| Pixel Pitch (mm)                     | 0.213(H) x 0.213(V)  |         |
| Viewing Angle                        | +60°~-60°(H), +65°~-55°(V)   |         |
| Display Colors                       | 16.2M  |         |
| Response Time (Typical)              | 30ms (Typical)   |         |
| Sync                                 | LVDS   |         |
| Power Consumption                    | 7W   |         |
| Dimensions (mm)                      | 199.5x149.5x11.6   |         |
| Weight (Net)                         | 380g   |         |
| LED Driving Board                    | LID 08A02  |         |
| Control Board (Optional)             | <input type="checkbox"/> AD5621GA <input type="checkbox"/> AD5621GD <input type="checkbox"/> AD5766GDVA <input type="checkbox"/> AD2662GDVAR |         |
| <input type="checkbox"/> AD5621GA    | VGA+Audio  |         |
| <input type="checkbox"/> AD5621GD    | VGA+DVI  |         |
| <input type="checkbox"/> AD5766GDVA  | VGA+CVBS+S-Video+Audio (Optional DVI / Component)  |         |
| <input type="checkbox"/> AD2662GDVAR | VGA+DVI (Optional S-Video/ Component / Audio)  |         |
| F / R Control Button                 | <input type="checkbox"/> 5 Key <input type="checkbox"/> 4 Key  |         |
| <input type="checkbox"/> 5 Key       | Power Switch, Menu, Select (+,-), Auto   |         |
| <input type="checkbox"/> 4 Key       | Power Switch, Menu, Select (+,-),  |         |
| OSD Menu                             | Brightness, Contrast, H/V Position, Color, Phase, Clock...   |         |
| Optional                             | <input type="checkbox"/> AOT <input type="checkbox"/> Touch Screen <input type="checkbox"/> Waterproof                                       |         |

Specifications are subject to change without notice.

All brands or product names are trademarks or registered trademarks of their respective companies.

**DLF**= Panel+LED Driving Board

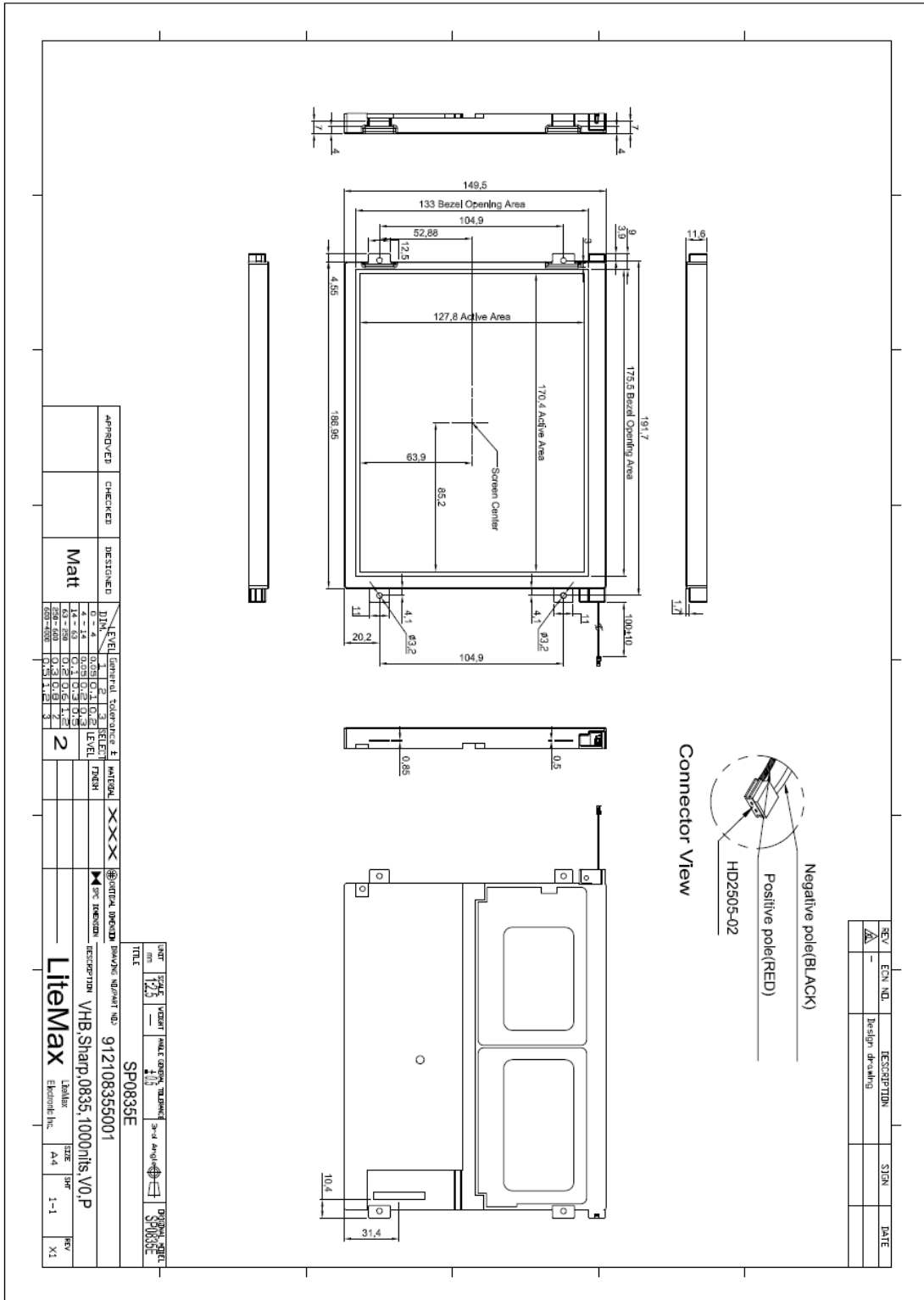
**DLH**= Panel+LED Driving Board+Control Board



## Mechanical Drawing

### Outline Dimensions

Unit:mm



## Ordering Information



| Part Number            | Description   |
|------------------------|---|
| <b>DLF0835-ENN-A01</b> | 8.4",1000nits,SVGA,LID08A02.v01                         |
| <b>DLH0835-ENN-A01</b> | 8.4",1000nits,SVGA.LID08A02,AD5621GA,V01                |
| <b>DLH0835-ENN-B01</b> | 8.4",1000nits,SVGA,LID08A02.AD5621GD,V01                |
| <b>DLH0835-ENN-C01</b> | 8.4",1000nits,SVGA,LID08A02.AD5621GD,V01                |
| <b>OLF0835-EGN-A01</b> | 8.4",1000nits,SVGA,LID08A02.AR glass.AOT,v01            |
| <b>OLH0835-ETA-A01</b> | 8.4",1000nits,SVGA.T/Liyi-RES/5W-USB.AD5621G,AOT-V1,V01 |
|                        |   |

### Optional Accessories

| Part Number         | Description                          |
|---------------------|--------------------------------------|
| <b>840612051100</b> | ADAPTER.12V.5A.60W.EA1050A,P         |
| <b>810618301010</b> | CABLE.POWER.AC.1830mm USA type       |
| <b>810618301090</b> | CABLE,POWER,AC,1830mm Europe type    |
| <b>810618301050</b> | CABLE.POWER.AC.1830mm UK type        |
| <b>810618301170</b> | CABLE.POWER,AC,1830mm Australia type |
| <b>810618301030</b> | CABLE.POWER.AC.1830mm Japan type     |
|                     |                                      |
|                     |                                      |