



DLF0844 / DLH0844

8.4" TFT LCD, LED Backlight 800nits, SVGA(800x600)

8.4" TFT LCD panel, built-in 800 nits high bright for sunlight readable LCD display, high transmittance color filter, high transmission polarizing plates, Low Power Consumption, suitable for kiosk, advertising, POS, marine, transportation, gaming, studio display, gas pump.

Key Features

- Sunlight Readable
- LED Backlight
- High Shock & Vibration Resistance
- Low Power Consumption
- Wide Operation Temperature. (-30°C ~ 85°C)
- High Uniformity
- Low EMI Noise
- Wide Dimming
- Life Expectancy



Specifications

Preliminary

Model No.	DLF0844	DLH0844
Description	8.4" TFT LCD, LED Backlight 800 nits, SVGA(800x600)	
Display Area (mm)	170.4(H) x 127.8(V)	
Brightness	800 cd/m ²	
Resolution	SVGA (800 x 600)	
Contrast Ratio	600 : 1	
Pixel Pitch (mm)	0.213 x 0.213	
Viewing Angle	160°(H), 140°(V)	
Display Colors	262K(6-bit) / 16.2M(8-bit)	
Response Time (Typical)	30 ms	
Sync	LVDS	
Power Consumption	3.3W	
Dimensions (mm)	203.0(W) x 142.5(H) x 5.7(D)	
Weight (Net)	200g	
LED Driving Board	LID 08	
Control Board (Optional)	<input type="checkbox"/> AD5621GA <input type="checkbox"/> AD5621GD <input type="checkbox"/> AD5766GDVA <input type="checkbox"/> AD2662GDVAR	
<input type="checkbox"/> AD5621GA	VGA+Audio	
<input type="checkbox"/> AD5621GD	VGA+DVI	
<input type="checkbox"/> AD2662GDVAR	VGA+DVI (Optional S-Video/ Component / Audio)	
F / R Control Button	<input type="checkbox"/> 5 Key <input type="checkbox"/> 4 Key	
<input type="checkbox"/> 5 Key	Power Switch, Menu, Select (+,-), Auto	
<input type="checkbox"/> 4 Key	Power Switch, Menu, Select (+,-),	
OSD Menu	Brightness, Contrast, H/V Position, Color, Phase, Clock...	
Optional	<input type="checkbox"/> AOT <input type="checkbox"/> Touch Screen	

Specifications are subject to change without notice.

All brands or product names are trademarks or registered trademarks of their respective companies.

DLF= Panel+LED Driving Board

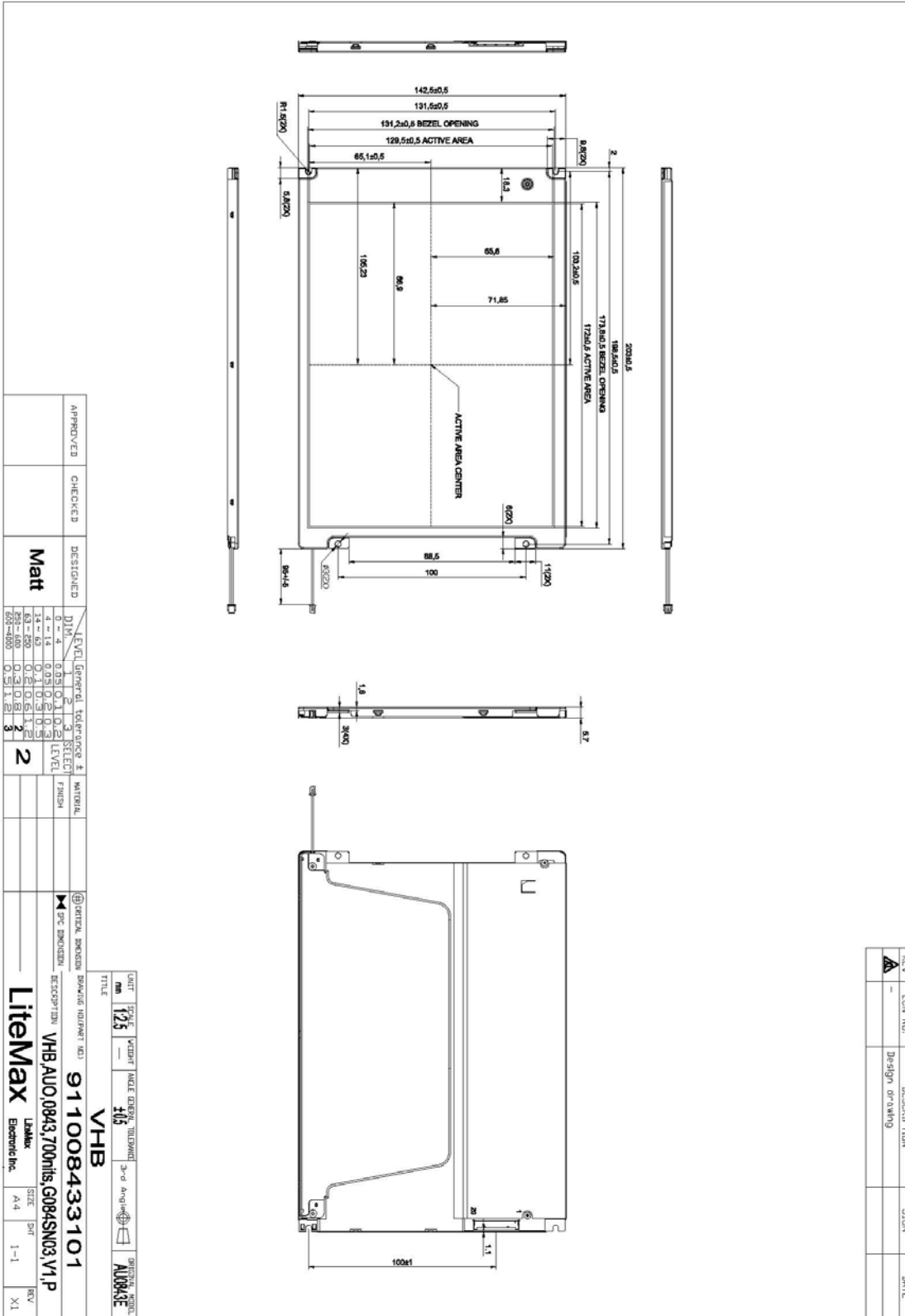
DLH= Panel+LED Driving Board+Control Board



Mechanical Drawing

Outline Dimensions

Unit:mm





Ordering Information

Model Name	Description
DLF0844-ENN-A01	8.4",800nits,SVGA, LID08,V01
DLH0844-ENN-A01	8.4",800nits,SVGA, LID08,AD5621G,V01

Optional Accessories

Part Number	Description
840612051100	ADAPTER.12V.5A.60W.EA1050A,P
810618301010	CABLE.POWER.AC.1830mm USA type
810618301090	CABLE,POWER,AC,1830mm Europe type
810618301050	CABLE.POWER.AC.1830mm UK type
810618301170	CABLE.POWER,AC,1830mm Australia type
810618301030	CABLE.POWER.AC.1830mm Japan type