

Product Description

18.5" Fanless, Intel® ATOM™ D510 1.66GHz Processor , Multi-Function Panel PC

Introduction

PPS1831 is a 18.5 inch fanless multi function panel PC, feature power efficient Intel embedded processor and advance long life LED backlight display. With projective capacity multi touch, wireless connectivity, smart card reader and VOIP telephone, PPS1831 provides infotainment solution at the same time.

Features:

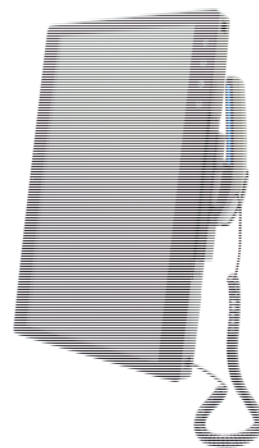
- 18.5" TFT LCD panel PC with 1366x768 resolution
- LED backlight with low power consumption and constant brightness
- Landscape & Portrait display mode support
- Fanless design provides silent operation
- Projective capacitive multi-touch screen provides easy and intuitive interactions with application
- Easily access swappable HDD and CF slot.
- VOIP telephone provides data and telephone communication onto a common network
- CMOS 1.3MP PC camera provides clear photo taken and motion monitoring
- Smart Card Reader (SCR)
- Wireless LAN and cable LAN provide flexible network connection
- Bluetooth module provides easily wireless connection
- IP54 same level facial screen with antibacterial coating provide water proof feature and reduce bacterial buildup

Optional Features:

- 3G CDMA2000 & HSPA+ and GPS/A-GPS support certified by Verizon, Vodafone and AT&T operator
- RFID & SCR combo Reader
- DVB-T & ATSC TV receiver support
- MSR
- IP Phone

Application:

- Multi Function Panel PC



Specifications

V1

Model Number	PPS1831
Description	18.5" Fanless, Intel® ATOM™ D510 1.66GHz Processor, Multi-Function Panel PC
Display	18.5" Wide LED Backlight
Active Display Area	304.128x228.096 mm
Brightness	250 cd/m2
Resolution	1366x768 (HD)
Touch Screen	Projective Capacitive Multi-Touch
Optical	AOT (Optional)
Computing Platform	
Processor	Intel® Atom D510 1.66GHz
Chip Set	Intel® ICH8M
Memory	SODIMM DDRII 533/667 Memory up to 2GB

Ethernet	Gigabit Ethernet x 2
Storage	2.5" SATAII HDD drive bay CF to SATAII socket module (optional)
External Connectivity	X2 RJ-45 Gigabit Ethernet (GbE) X4 USB2.0 X1 COM port RS232 X1 Audio Mic-in, Line-out X1 Smart Card Reader X2 RJ-11 (at right and left side) X1 Four pins DC Input connector X1 DVB-T Antenna connector (IEC type)
Internal Connectivity	Speaker: 2x2W stereo speaker Internal Microphone: Build in PC Camera: USB Video Class (UVC) compliant camera module Bluetooth: Bluetooth v2.0 + EDR Wireless LAN: WiFi 802.11 b/g OSD: (4 keys and 1 LED) Power on/off button, Power LED, Manual, Volume (+), Volume (-)
Optional Features	IP Phone: Internet Softphone DVB-T: Digital Video Broadcasting-Terrestrial DAB: Digital Audio Broadcasting RFID: Standard protocol Mifare classic ISO 14443 A&B&C 13.56MHz Smart Card Interface: Standard protocol ISO7816-3 ,EMV L1
Power	
Voltage	DC Input: DC 12V
Power Adaptor	DC 12V Output AC100V~240V input
Power Consumption	41W
Mechanical	
IP Rating	IP54 standards when console mounted.
Construction	Antibacterial plastic housing
Mounting	VESA75/VESA100
Dimension	447.2x291.7x58.98 mm
Net Weight	5.4Kg
Environmental	
Operating Temperature	0°C~40°C
Storage Temperature	-20°C ~ 60°C
Operating Humidity	5~95% @ 40°C, non-condensing

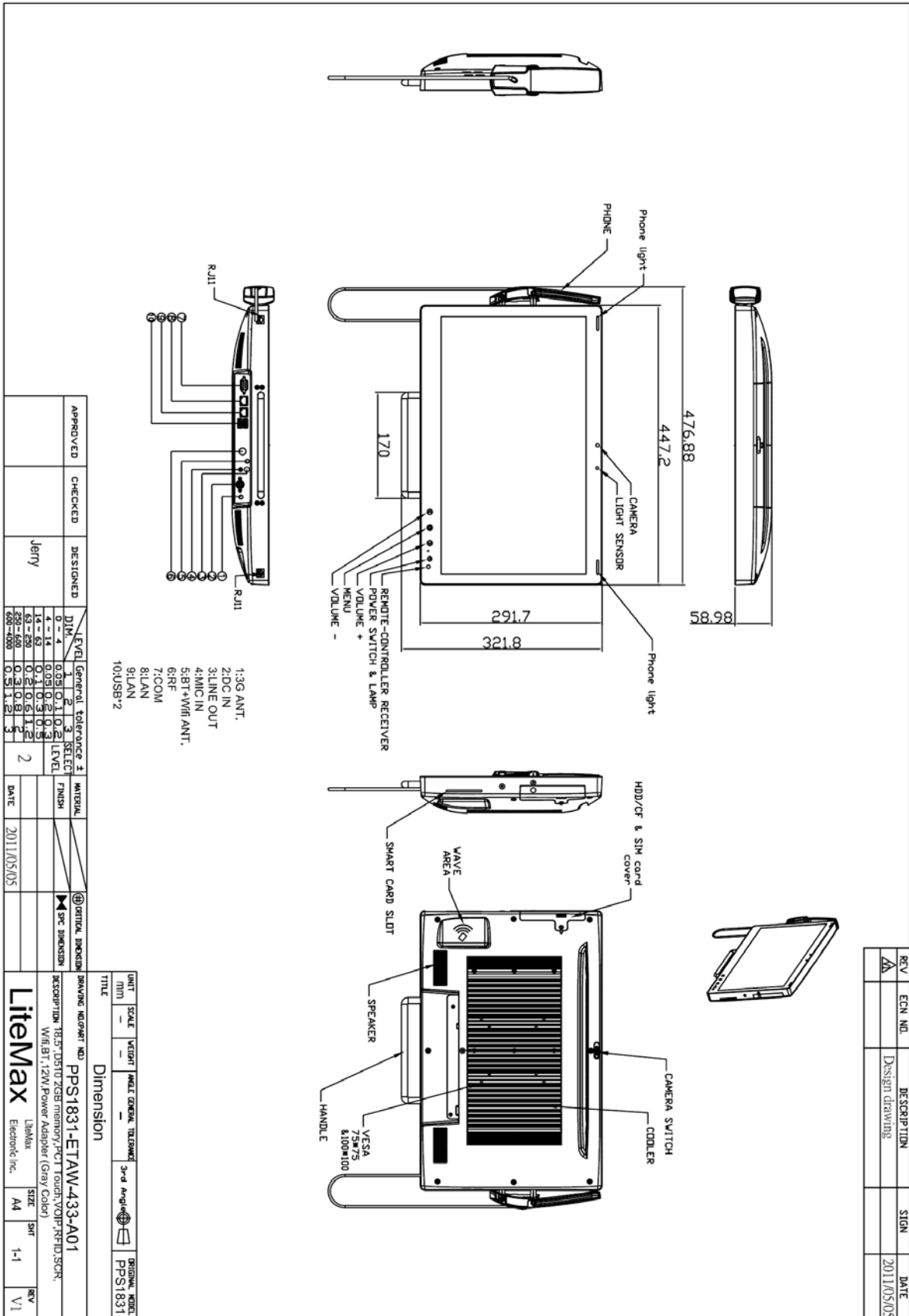
Specifications are subject to change without notice.

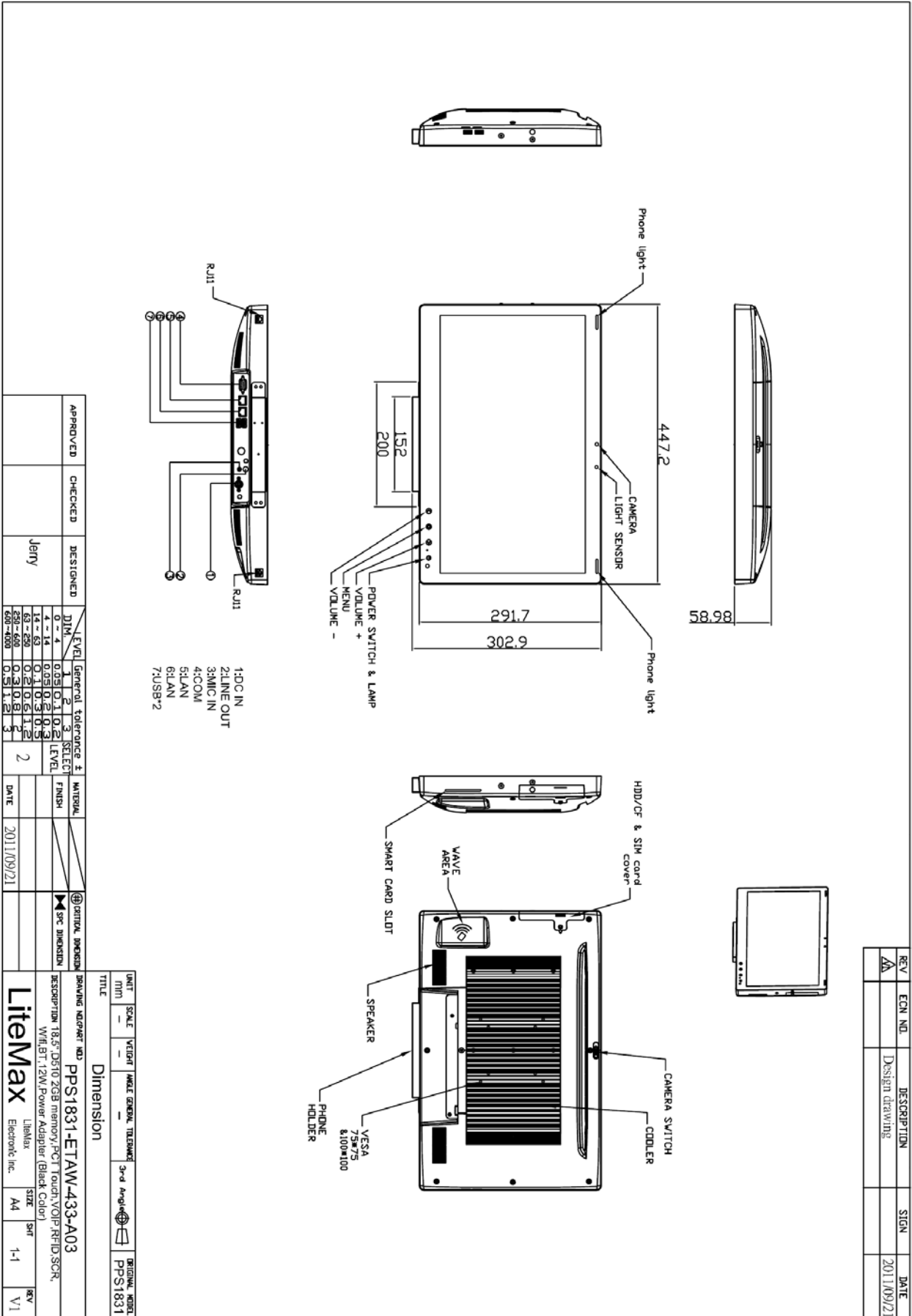
All brands or product names are trademarks or registered trademarks of their respective companies.

Mechanical Drawing

Outline Dimensions

Unit:mm





APPROVED	CHECKED	DESIGNED	LEVEL	General tolerance & DIM.	SELECT LEVEL	MATERIAL FINISH	DATE
		Jerry	0-2	0.05/0.1/0.2/0.3	3		2011/09/21
			3-4	0.05/0.1/0.2/0.3	2		
			5-14	0.1/0.2/0.3/0.5	1		
			15-29	0.2/0.3/0.5/1.0	0		
			30-49	0.3/0.5/1.0/2.0	0		
			50-99	0.5/1.0/2.0/3.0	0		
			100-499	0.5/1.0/2.0/3.0	0		
			500-999	0.5/1.0/2.0/3.0	0		

UNIT	SCALE	VELOCITY	ANGLE	GENERAL TOLERANCE	3rd Angle	ORIGINAL MODEL
mm	1:1					PPS1831
TITLE: Dimension						
DRAWING NO: PPS1831-ETAW-433-A03						
DESCRIPTION: 18.5" D810 Z88 memory, PC1 Touch, VOIP, RFID, SCR, VIB, BT, 12W Power Adapter (Black Color)						
LienMax		LienMax Electronic Inc.	SIZE: A4	SHR: 1-1	REV: V1	

REV	ECON NO.	DESCRIPTION	SIGN	DATE
A		Design drawing		2011/09/21



Ordering Information

PPS1831-ETAW-433-A01	18.5", D510 2GB memory, PCT Touch, VOIP, RFID, SCR, Wifi+BT, 3G, DC12V input, Landscape (Gray Color)
PPS1831-ETAW-433-A02	18.5", D510 2GB memory, PCT Touch, VOIP, RFID, SCR, Wifi+BT, 3G, DC12V input, Portrait (Black Color)
PPS1831-ETAW-433-A03	18.5", D510 2GB memory, PCT Touch, VOIP, RFID, SCR, Wifi+BT, DC12V input, Portrait (Black Color)
PPS1831-ETAW-433-A11	18.5", D510 2GB memory, PCT Touch, VOIP, RFID, SCR, Wifi+BT, 3G, DC12V input, Landscape (Gray Color)
PPS1831-ETAW-433-A12	18.5", D510 2GB memory, PCT Touch, VOIP, RFID, SCR, Wifi+BT, 3G, DC12V input, Portrait (Black Color)
PPS1831-ETAW-433-A13	18.5", D510 2GB memory, PCT Touch, VOIP, RFID, SCR, Wifi+BT, DC12V input, Portrait (Black Color)

Optional Accessories

840612051210	ADAPTER, AC/DC, 12V/5.4A, 65W, Atech OEM A065112-TDx.4P SLIDING CAP, P
810618301010	CABLE.POWER.AC.1830mm USA type
810618301090	CABLE.POWER.AC.1830mm Europe type
810618301050	CABLE.POWER.AC.1830mm UK type
810618301170	CABLE.POWER.AC.1830mm Australia type
810618301030	CABLE.POWER.AC.1830mm Japan type