



SLA4215

42"W Digital Signage LCD, Sunlight Readable 1000 nits.

42" Widescreen Digital Signage LCD, built-in 1000 nits high bright for sunlight readable. High transmittance color filter is designed to deliver graphics, text, video and advertisement in high resolution. It is an high brightness eye-catching display and perfect for retail, hospitality, airports, bus terminals, educational settings, restaurants, conference rooms, stock exchanges, and public spaces.

Key Features

- Sunlight Readable
- 1000 nits High Brightness
- High Resolution HD
- Medial Player Build In
- 5W x2 Stereo Speakers
- 8G CF Card



Specifications

V1

Model Number	SLA4215
Description	42"W Digital Signage LCD, Sunlight Readable 1000 nits.
Audio Output	5 Watts x 2 Speakers
Network	10/ 100 Mbps Ethernet
Network Protocol	HTTP Authentication
Video Type	HD 1080i
Multi-Zone Support	Yes
LCD Display	
Size	42" Wide Screen
Brightness	1000 cd/m ²
Resolution	1366 x 768 (WXGA)
Number of Colors	16.7M colors
Contrast Ratio	1000:1
Response Time	8ms
Sync	LVDS
Viewing Angle	178°(H), 178°(V)
System	
Storage	Compact Flash™ Type I/II or HDD
Voltage	AC Input: AC 100 ~ 240V
Power Consumption	245 Watts
Dimension	967x558.6x86.6 mm
Net Weight	41.5kg
Optional	<input type="checkbox"/> AOT <input type="checkbox"/> Touchscreen <input type="checkbox"/> Waterproof
Supported File Format	
Video	MPEG-1/2, MPEG-4, WMV9
Audio	WMA9 basic profile
Graphics	JPEG, PNG
Text Banner	Variable scrolling speed and position
Playlist	Scheduling playback, Endless loop playback
Environmental	
Operating Temperature	-10°C ~ 50°C
Storage Temperature	-20°C ~ 70°C
Certification	CE/FCC

Specifications are subject to change without notice.



All in One
Digital Signage
Solutions

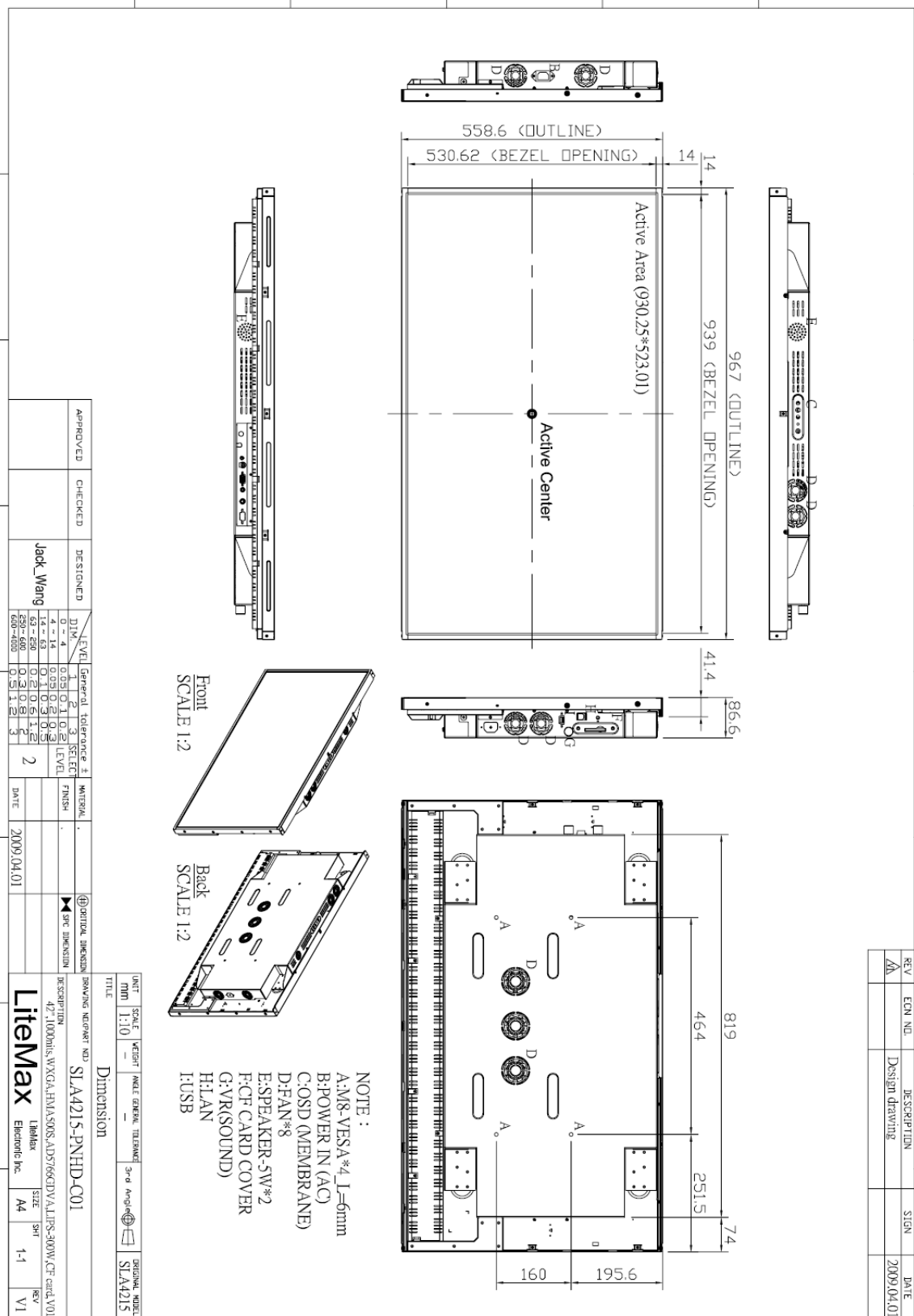


All brands or product names are trademarks or registered trademarks of their respective companies.

Mechanical Drawing

Outline Dimensions

Unit:mm





All in One
Digital Signage
Solutions



Ordering Information

Part Number	Description
SLA4215-PNHD-C01	42", 1000nits, WXGA, HMA500S, AD5766GDVA, LIPS-300W, CF card, V01

Optional Accessories

Part Number	Description
810618301010	CABLE.POWER.AC.1830mm USA type
810618301090	CABLE,POWER,AC,1830mm Europe type
810618301050	CABLE.POWER.AC.1830mm UK type
810618301170	CABLE.POWER,AC,1830mm Australia type
810618301030	CABLE.POWER.AC.1830mm Japan type