



## SLD 2225 22" Wide TFT LCD Monitor, 1000nits, WSXGA

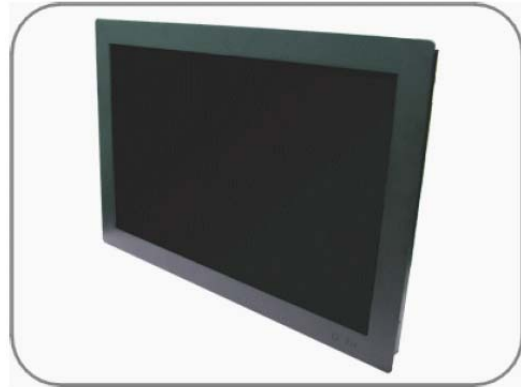
SLD2225 wide TFT LCD monitor, built-in 1000 nits high brightness for sunlight readable display. It offers the best visibility, performance and cost effective value. The high level of brightness together with the optimal contrast ratio renders high quality images and enhances legibility. With its fast response time and backlight technology, the monitor brings remarkable display quality and durability for your applications. Suitable for marine, military, medical, transportation, and industrial application.

### Key Features

- Sunlight Readable
- Wide Viewing Angle
- High Contrast Ratio
- Long Lamp Life
- Fast Response Time
- Thin and Light

### Applications

Marine, Military,  
Medical, Transportation  
Industrial



## Specifications

V1

<b>Model No.</b>	<b>SLD2225</b>
<b>Description</b>	22" Wide TFT LCD monitor, 1000 nits, WSXGA
<b>Display Area (mm)</b>	473.76 x 296.1mm
<b>Brightness</b>	1000 cd/m <sup>2</sup>
<b>Resolution</b>	1680x1050 (WSXGA+)
<b>Contrast Ratio</b>	1000 : 1
<b>Pixel Pitch (mm)</b>	0.282(H) x 0.282(V)
<b>Viewing Angle</b>	+85°~-85°(H), +80°~-80°(V)
<b>Display Colors</b>	16.7M
<b>Response Time (Typical)</b>	5ms
<b>Power Input</b>	DC-12V
<b>Power Consumption</b>	70W
<b>Dimensions (mm)</b>	545x370x61.6
<b>Weight (Net)</b>	6.61Kg
<b>Control Board (Optional)</b>	<input type="checkbox"/> AD5621GA <input type="checkbox"/> AD5621GD <input type="checkbox"/> AD5766GDVA <input type="checkbox"/> AD2662GDVAR
<input type="checkbox"/> AD5621GA	VGA+Audio
<input type="checkbox"/> AD5621GD	VGA+DVI
<input type="checkbox"/> AD5766GDVA	VGA+CVBS+S-Video+Audio (Optional DVI / Component)
<input type="checkbox"/> AD2662GDVAR	VGA+DVI (Optional S-Video/ Component / Audio)
<b>F / R Control Button</b>	<input type="checkbox"/> 5 Key <input type="checkbox"/> 4 Key
<input type="checkbox"/> 5 Key	Power Switch, Menu, Select (+,-), Auto
<input type="checkbox"/> 4 Key	Power Switch, Menu, Select (+,-),
<b>OSD Menu</b>	Brightness, Contrast, H/V Position, Color, Phase, Clock...
<b>Optional</b>	<input type="checkbox"/> AOT <input type="checkbox"/> Touch Screen <input type="checkbox"/> Waterproof

*Specifications are subject to change without notice.*

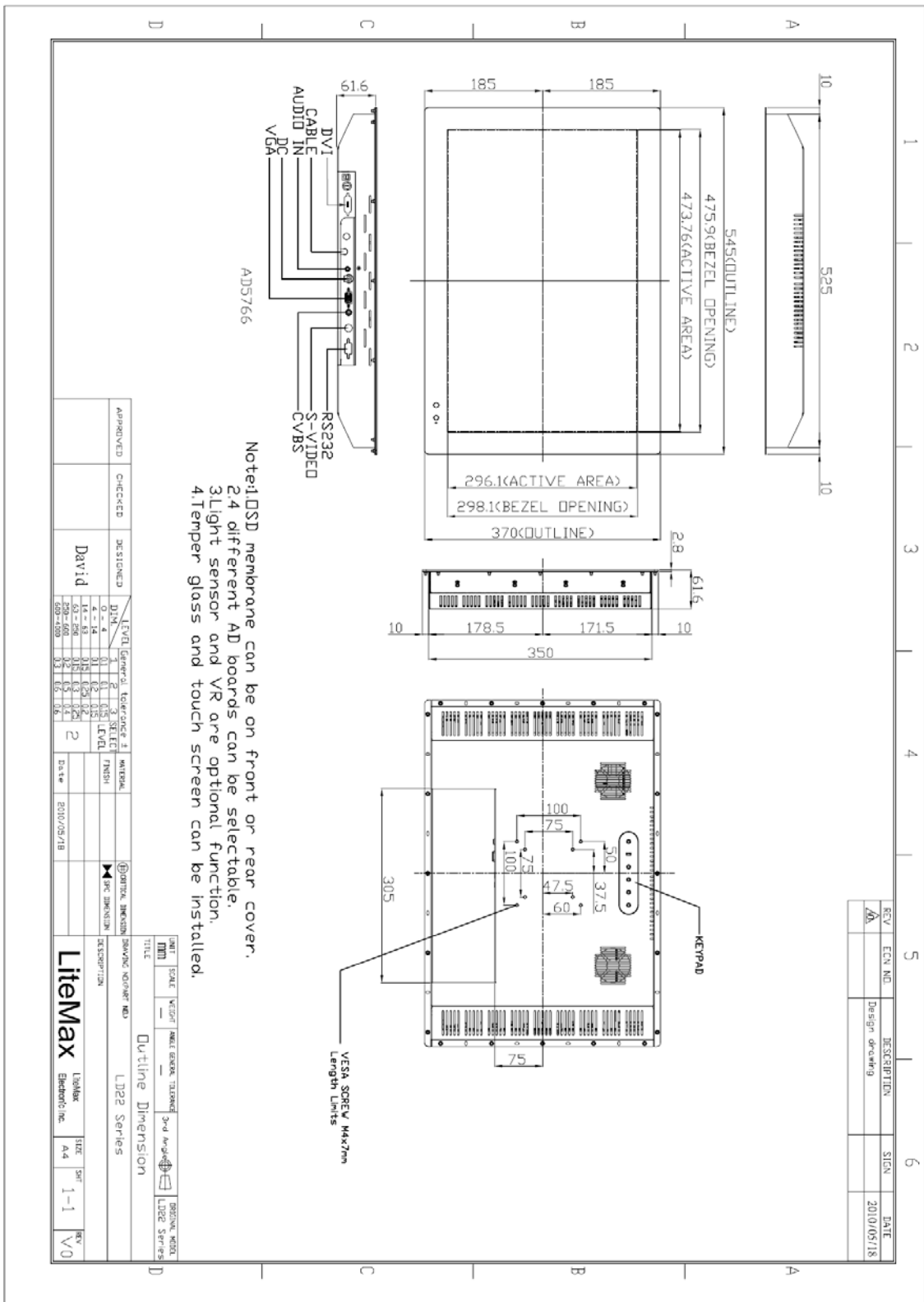
*All brands or product names are trademarks or registered trademarks of their respective companies.*

## Mechanical Drawing



Outline Dimensions

Unit:mm



Ordering Information



Part Number	Description
SLD2225-SNB-C01	22",1000nits,WSXGA+,O/B,RS232.AD5766GDV,V01

### Optional Accessories

Part Number	Description
840612111200	ADAPTER.12V.10A.120W.PAC120F.DC POWER DIN,P
810618301010	CABLE.POWER.AC.1830mm USA type
810618301090	CABLE,POWER,AC,1830mm Europe type
810618301050	CABLE.POWER.AC.1830mm UK type
810618301170	CABLE.POWER,AC,1830mm Australia type
810618301030	CABLE.POWER.AC.1830mm Japan type