



## SLD4225

### 42" TFT LCD Display, LED Backlight, 1000nits,FHD(1920x1080)

42" TFT LCD panel, built-in 1000 nits high bright for sunlight readable LCD display, high transmittance color filter, high transmission polarizing plates, Low Power Consumption, suitable for kiosk, Digital Signage, gaming, studio display, gas pump.

#### Key Features

- Sunlight Readable
- LED Backlight
- Full HD(1920x1080)
- High Shock & Vibration Resistance
- Low Power Consumption
- High Uniformity
- Low EMI Noise
- Wide Dimming
- Life Expectancy
- Wide Viewing Angle



### Specifications

Preliminary

<b>Model No.</b>	<b>SLD4225</b>
<b>Description</b>	42" TFT LCD Display, LED Backlight, 1000nits, FHD(1920x1080)
<b>Display Area (mm)</b>	930.24 x 523.26mm
<b>Brightness</b>	1000 cd/m <sup>2</sup>
<b>Resolution</b>	1920x1080 (FHD)
<b>Contrast Ratio</b>	3000 : 1
<b>Pixel Pitch (mm)</b>	0.1615 (H) x 0.4845 (V)
<b>Viewing Angle</b>	+88°~88°(H), +88°~88°(V)
<b>Display Colors</b>	16.7M
<b>Response Time (Typical)</b>	8.5ms
<b>Power Consumption</b>	162W
<b>Dimensions (mm)</b>	978.5x570x61.7mm
<b>Weight (Net)</b>	20Kg
<b>LED Driving Board</b>	LID42C01
<b>Control Board (Optional)</b>	<input type="checkbox"/> AD5621GA <input type="checkbox"/> AD5621GD <input type="checkbox"/> AD5766GDVA <input type="checkbox"/> AD2662GDVAR
<input type="checkbox"/> AD5621GA	VGA+Audio
<input type="checkbox"/> AD5621GD	VGA+DVI
<input type="checkbox"/> AD5766GDVA	VGA+CVBS+S-Video+Audio (Optional DVI / Component)
<input type="checkbox"/> AD2662GDVAR	VGA+DVI (Optional S-Video/ Component / Audio)
<b>F / R Control Button</b>	<input type="checkbox"/> 5 Key <input type="checkbox"/> 4 Key
<input type="checkbox"/> 5 Key	Power Switch, Menu, Select (+,-), Auto
<input type="checkbox"/> 4 Key	Power Switch, Menu, Select (+,-),
<b>OSD Menu</b>	Brightness, Contrast, H/V Position, Color, Phase, Clock...
<b>Optional</b>	<input type="checkbox"/> AOT <input type="checkbox"/> Touch Screen

Specifications are subject to change without notice.

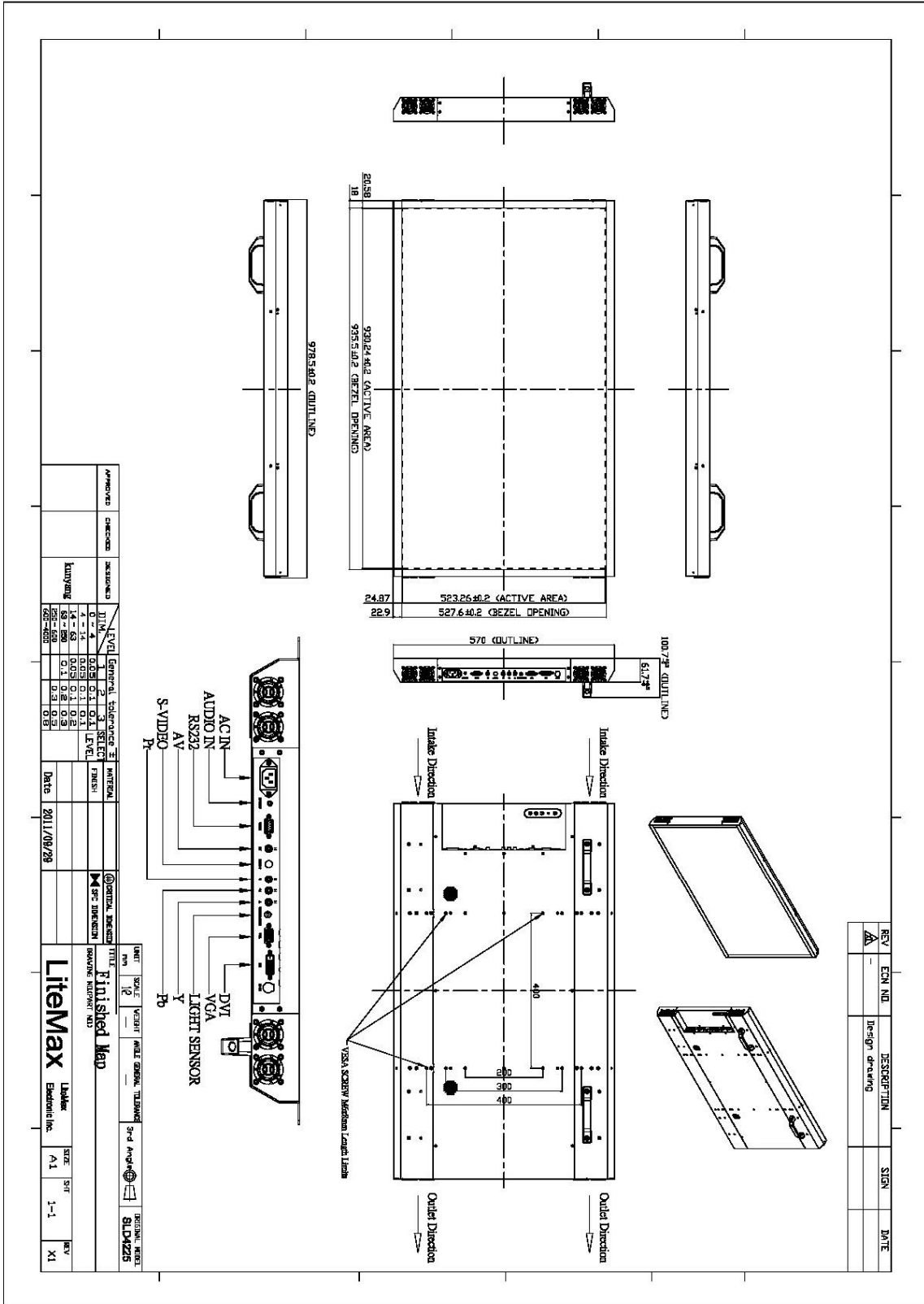
All brands or product names are trademarks or registered trademarks of their respective companies.



## Mechanical Drawing

### Outline Dimensions

Unit:mm



## Ordering Information



Part Number	Description
SLD4225-ENB-G01	42",1000nits,FHD,LID42C01,O/B,AD2662GD,AC100-240V ,V01

**Optional Accessories**

Part Number	Description
810618301010	CABLE.POWER.AC.1830mm USA type
810618301090	CABLE,POWER,AC,1830mm Europe type
810618301050	CABLE.POWER.AC.1830mm UK type
810618301170	CABLE.POWER,AC,1830mm Australia type
810618301030	CABLE.POWER.AC.1830mm Japan type