



SLO4225

42" Open Frame LCD Display, LED Backlight, 1000nits,FHD(1920x1080)

42" Open Frame LCD panel, built-in 1000 nits high bright for sunlight readable LCD display, high transmittance color filter, high transmission polarizing plates, Low Power Consumption, suitable for kiosk, Digital Signage, gaming, studio display, gas pump.

Key Features

- Sunlight Readable
- LED Backlight
- Full HD(1920x1080)
- High Shock & Vibration Resistance
- Low Power Consumption
- High Uniformity
- Low EMI Noise
- Wide Dimming
- Life Expectancy
- Wide Viewing Angle



Specifications

Preliminary

Model No.	SLO4225
Description	42" Open Frame LCD Display, LED Backlight, 1000nits, FHD(1920x1080)
Display Area (mm)	930.24 x 523.26mm
Brightness	1000 cd/m ²
Resolution	1920x1080 (FHD)
Contrast Ratio	3000 : 1
Pixel Pitch (mm)	0.1615 (H) x 0.4845 (V)
Viewing Angle	+88°~88°(H), +88°~88°(V)
Display Colors	16.7M
Response Time (Typical)	8.5ms
Power Consumption	162W
Dimensions (mm)	971.5x620x61.73mm
Weight (Net)	22.5Kg
LED Driving Board	LID42C01
Control Board (Optional)	<input type="checkbox"/> AD5621GA <input type="checkbox"/> AD5621GD <input type="checkbox"/> AD5766GDVA <input type="checkbox"/> AD2662GDVAR
<input type="checkbox"/> AD5621GA	VGA+Audio
<input type="checkbox"/> AD5621GD	VGA+DVI
<input type="checkbox"/> AD5766GDVA	VGA+CVBS+S-Video+Audio (Optional DVI / Component)
<input type="checkbox"/> AD2662GDVAR	VGA+DVI (Optional S-Video/ Component / Audio)
F / R Control Button	<input type="checkbox"/> 5 Key <input type="checkbox"/> 4 Key
<input type="checkbox"/> 5 Key	Power Switch, Menu, Select (+,-), Auto
<input type="checkbox"/> 4 Key	Power Switch, Menu, Select (+,-),
OSD Menu	Brightness, Contrast, H/V Position, Color, Phase, Clock...
Optional	<input type="checkbox"/> AOT <input type="checkbox"/> Touch Screen

Specifications are subject to change without notice.

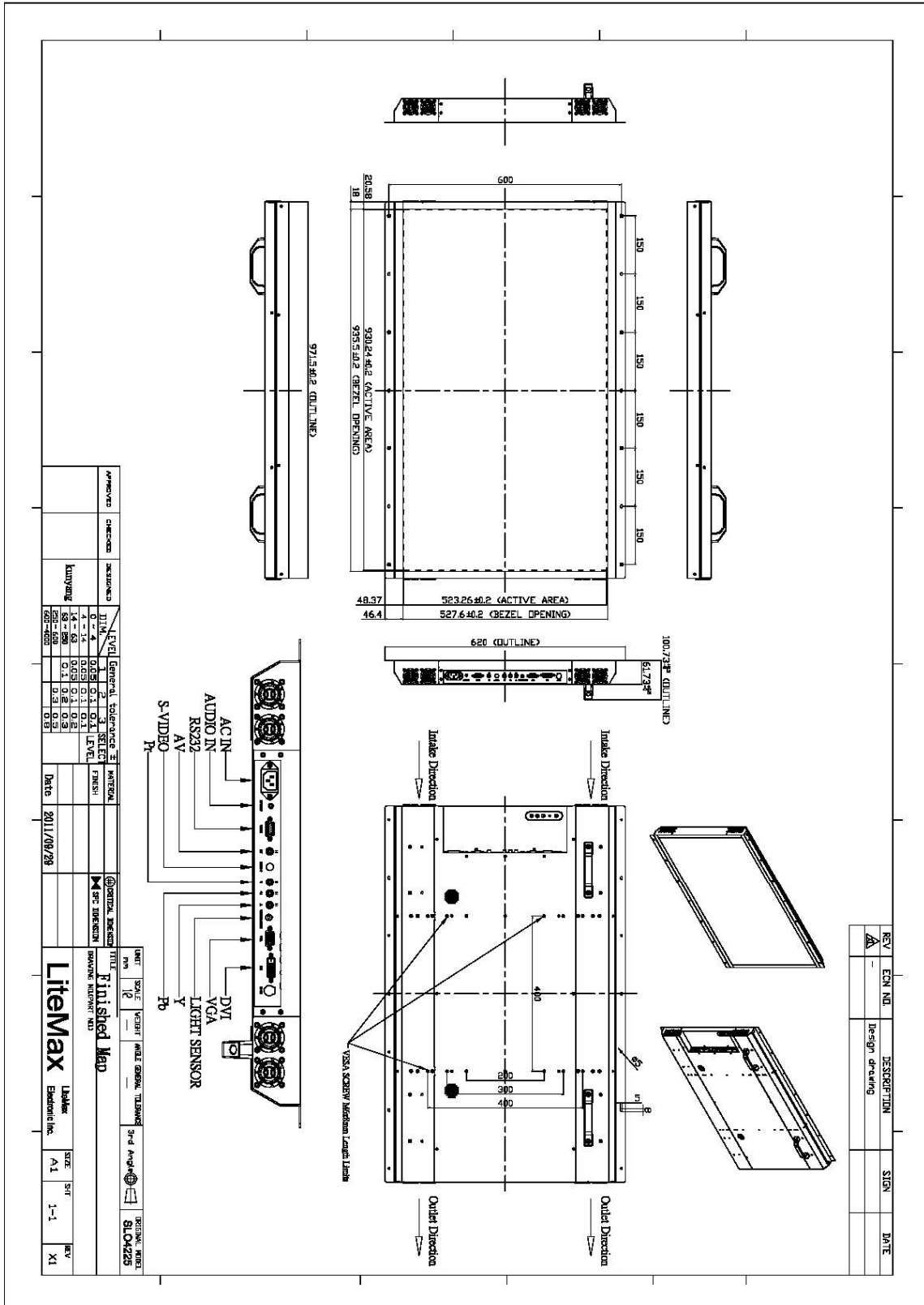
All brands or product names are trademarks or registered trademarks of their respective companies.



Mechanical Drawing

Outline Dimensions

Unit:mm





Ordering Information

Part Number	Description
SLO4225-ENB-G01	42" ,1000nits,FHD,LID42C01,O/B,AD2662GD,AC100-240V ,V01

Optional Accessories

Part Number	Description
810618301010	CABLE.POWER.AC.1830mm USA type
810618301090	CABLE,POWER,AC,1830mm Europe type
810618301050	CABLE.POWER.AC.1830mm UK type
810618301170	CABLE.POWER,AC,1830mm Australia type
810618301030	CABLE.POWER.AC.1830mm Japan type