



SSD3825

38" Resizing LCD, 1000 nits LED backlight, 1920x502 ultra wide aspect ratio 16:4.2

SSD3825 is an innovative ultra-wide, sunlight readable, LED backlight LCD display. It provides LCD panel with specific ratios for digital signage, public transportation, exhibition hall, department store, vending machine and industrial applications. Incorporating with A.D. control board and backlight design, it is high brightness and sunlight readable panel, can display high-quality video with energy-efficient.

Key Features

- Resizing LCD
- Ultra Wide Screen (16 : 4.2)
- Sunlight Readable
- LED Backlight
- High Brightness 1000 nits
- Low Power Consumption
- High Uniformity (90%)
- Wide Dimming
- Life Expectancy (70,000hrs)
- Slim Bezel



Specifications

V1

Model No.	SSD3825
Description	38" Resizing LCD, 1000 nits LED backlight, 1920x502
Display Area	930.2 x 243.2 mm
Brightness	1,000 cd/m ²
Resolution	1920 x 502
Aspect Ratio	16 : 4.2
Contrast Ratio	1400:1
Pixel Pitch (mm)	0.4845 x 0.4845
Viewing Angle	178°(H), 178°(V)
Display Colors	1073M
Response Time (Typical)	5 ms
Sync	LVDS
Power Consumption	101W
Dimensions (mm)	967.6 x 279.4 x 61.3
Weight (Net)	9 Kg
LED Driving Board	LID38A01
Control Board (Optional)	AD2662/8668GD, AD2662/8668GDVAR
<input type="checkbox"/> AD2662/8668GD	VGA + DVI
<input type="checkbox"/> AD2662/8668GDVAR	VGA + DVI (Optional AV/ S-Video / Component / Audio)
<input type="checkbox"/> Others	
F / R Control Button	5 Key / 4 Key
<input type="checkbox"/> 4 Key	Power Switch, Menu, Select (+,-),
<input type="checkbox"/> 5 Key	Power Switch, Menu, Select (+,-),Auto
OSD Menu	Brightness, Contrast, H/V Position, Color, Phase, Clock...
Optional	<input type="checkbox"/> Touch Screen

Specifications are subject to change without notice.

All brands or product names are trademarks or registered trademarks of their respective companies.

SSD = Panel+ LED Driving Board + Control Board

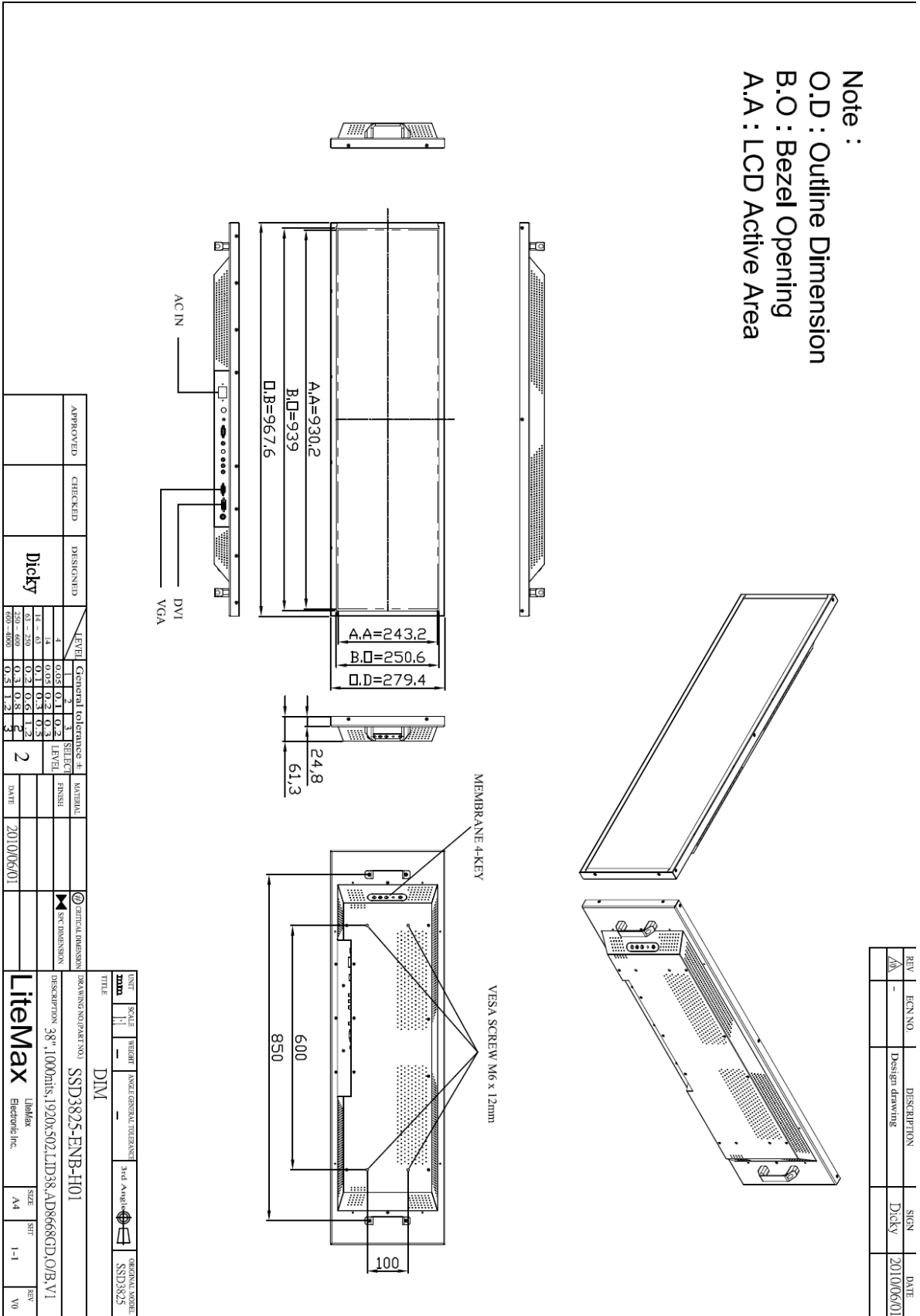


Mechanical Drawing

Outline Dimensions

Unit: mm

Note :
 O.D : Outline Dimension
 B.O : Bezel Opening
 A.A : LCD Active Area





Ordering Information

Model Name	Description
SSD3825-ENB-G01	38",1000nits,1920*502,LID38.AD2662GD,O/B,DC19~36V input.V1
SSD3825-ENB-G02	38",1000nits,1920*502,LID38.AD2662GD,O/B,AC100~240 input.V1

Optional Accessories

Part Number	Description
810618301010 (Optional)	CABLE.POWER.AC.1830mm.(US Type).3PIN PLUG TO SOCKET.SVT(SPT-2)18AWG 3C BLACK,P.
810618301090 (Optional)	CABLE,POWER,AC,1830mm.(EU Type) 3PIN PLUG TO.SOCKET,H05VV-F 3G.0.75MMSQ BLACK,P
810618301050 (Optional)	CABLE,POWER,AC,1830mm.UK(FUSE) 3PIN PLUG TO.SOCKET,H05VV-F 3C(3G) 0.75MMSQ BLACK,P
810618301170 (Optional)	CABLE.POWER,AC,1830mm. (AU Type) 3PIN PLUG TO 2P SOCKET.LTSA 0.75MMSQ BLACK,P
810618301030 (Optional)	CABLE.POWER.AC.1830mm.(JP Type).2PIN PLUG Y TERMINAL TO. SOCKET.VCTF 3C 0.75MMSQ BLACK,P