



# LITEMAX LI0812

## Inverter

(1st Edition 8/6/2007 )

All information is subject to change without notice.

Approved by	Checked by	Prepared by
David	Sharline	Eric

**LITEMAX Electronics Inc.**  
8F-2, No.133, Lane 235, Bau-chiau Rd.,  
Shin-dian City, Taipei County, Taiwan R.O.C.  
Tel : 886-2-8919-1858  
Fax: 886-2-8919-1300  
Homepage: <http://www.litemax.com.tw>

## General

1. General The DC To AC inverter is designed as a low noise high frequency high efficiency as a low profile and light weight switching power supply.
2. Feature Applicable TO 8Tube Constant Current output Possesses open load protection No load – output auto stop Meet TCO 99
3. LCD Application

			Remark
LCD SIZE	Lcm Model	Brand	
12"			

### JP: Lamp Current & Frequency Adjust

- 1 Operating Conditions
- 2 Operating Characteristics

Item	Symbol	Conditions	MIN	MAX	Unit	Remark
Input Voltage	Vin		10	14-	V	
Operating Temperature	Top	Ha=90%RH	-10	75	°C	
Storage Temperature	Tstg	Ha=95%RH	-10	80	°C	
Operating Humidity	Hop	Ta=0~55 °C	20	90	%RH	
Storage Humidity	Hstg	Ta=20~80 °C	-	95	%RH	

Item	Symbol	Conditions	MIN.	TYP	MAX.	Unit	Remark
Input Voltage	Vin	GND=0V	10.8	12	13.2	V	
Input Current (Low Brightness)	IinL	Vin=TYP. ±1% ON VR=MIN (Iout=MIN)		40		mA	CV=4.8V
Input Current (High Brightness)	IinH	Vin=TYP. ±1% ON VR=MAX (Iout=MAX)	1800	1950	2100	mA	CV=0.15V
Lamp Current (Low Brightness)	IoutL	Vin=TYP. ±1% ON VR=MIN (Iout=MIN)				mA rms	CV=4.8V

Lamp Current (High Brightness)	I <sub>outH</sub>	V <sub>in</sub> =TYP. ±1% ON VR=MAX (I <sub>out</sub> =MAX)	5.0	5.5	6.0	mA rms	CV=0.15V
Working Frequency			40	43	46	KHZ	
Dimming		Tube Current	0%	-	100%		
Dimming Frequency			365	380	395	Hz	
Brightness Control		Connection of Voltage	5		0	V	
Output Voltage		CCFT Current =6mA				V	

## 6. Connector Socket

### 6-1. (CN3) Input Connector

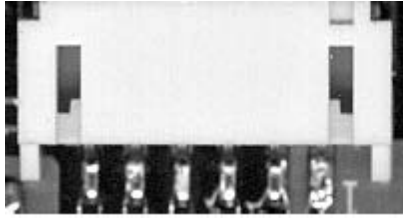
PIN No	Symbol	Description
1	V <sub>in</sub>	DC+12V
2	V <sub>in</sub>	DC+12V
3	Brightness	Digital Brightness Control
4	Control	ON/OFF control ON=+5V OFF=0V
5	GND	Ground
6	GND	Ground

### 6-2 (CN1, 2, 4, 5) Output Connector

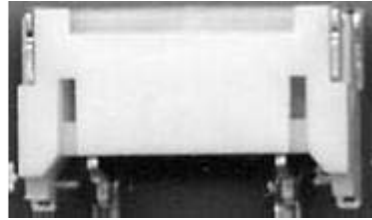
PIN No	Symbol	Description
1	Output	Lamp High Voltage
2	Output	Lamp Low Voltage

### 6-3 Connector Model No & Brand

Connector No.	Connector Parts No	Brand
CN3	S6B-PH-SM3	JST
CN1,2,4,5	SM02(8.0)	JST



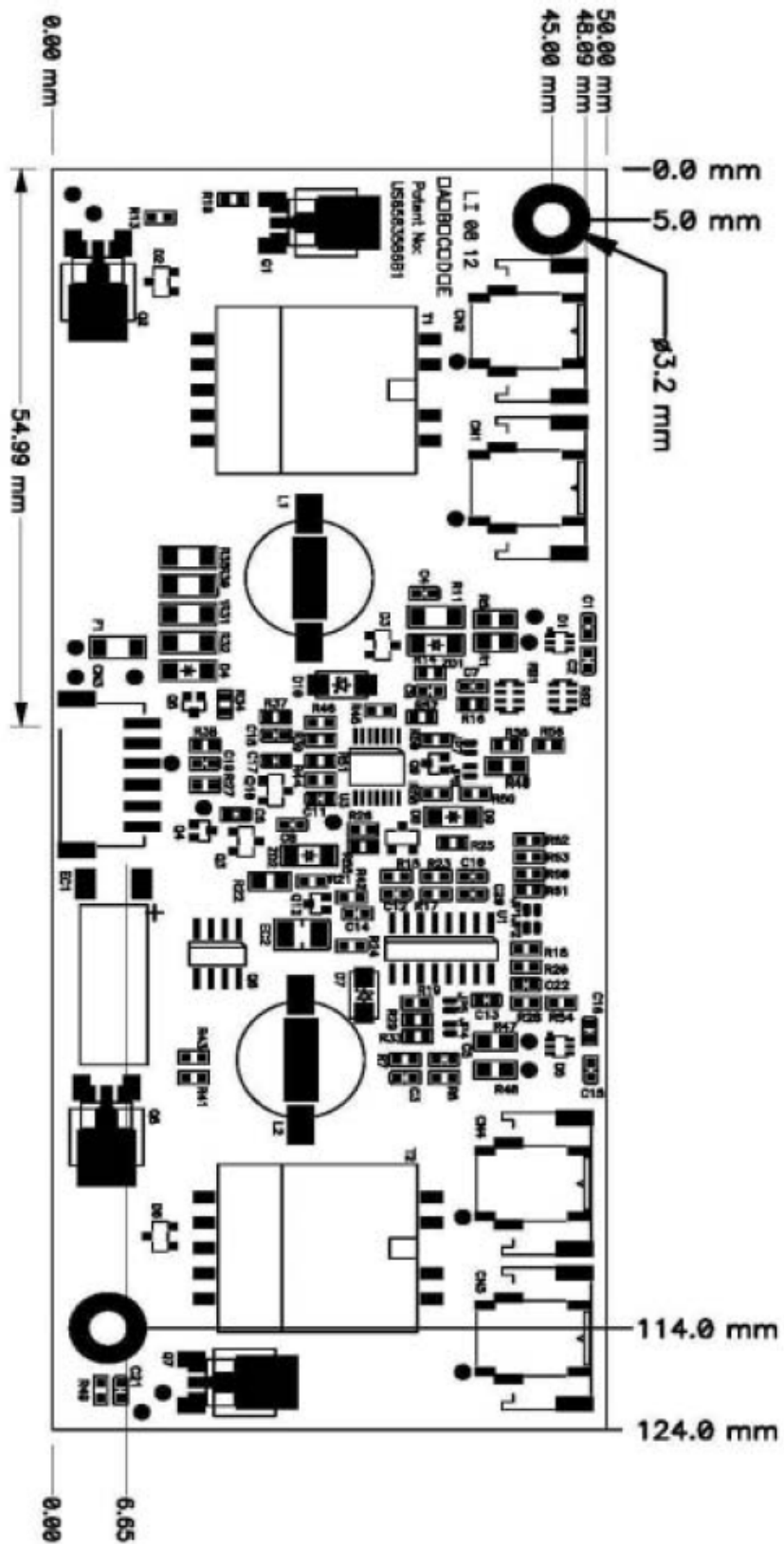
S6B-PH-K SM02(8.0) (pin1)



(pin1)

## 7. Mechanical Characteristics

Dimension: 124mm \* 50mm \* 11mm Weight: MAX. 47g



## Mechanical Characteristics

Dimension: 205mm\*80mm\*14mm  
 Weight: MAX. 47g

