



LITEMAX LI1017A01

Inverter

(1st Edition 8/6/2007)

All information is subject to change without notice.

Approved by	Checked by	Prepared by
David	Sharline	Eric

LITEMAX Electronics Inc.
8F-2, No.133, Lane 235, Bau-chiau Rd.,
Shin-dian City, Taipei County, Taiwan R.O.C.
Tel : 886-2-8919-1858
Fax: 886-2-8919-1300
Homepage: <http://www.litemax.com.tw>

General

1. APPLICATION This specification is applied to CCFL inverter unit for 17" 10 Lamp LCD backlight.

2. ELECTRICAL CHARACTERISTICS

No.	Item	Symbol	Condition	Min.	Typ.	Max.	Unit
1	Input Voltage	Vin		10.8	12.0	13.2	V
2	Input Current	Iin	Vin= 12 V, Vadj = 0.5 V (10 Lamp)			3.6	A
3	Input Power	Pin	Vin= 12 V, Vadj = 0.5 V (10 Lamp)			45	W
4	Backlight ON/OFF Control	Von	Normal Operation	2.4		5.0	V
		Voff	Shutdown	0		1.2	V
		Ion	Von = 2.4V ~ 5.0V	15		45	μA
		Ioff	Voff = 0 V~1.2V	0		5	μA
5	Brightness Adjust (Lamp Current Control)	Vadj	Normal Operation	0		5.0	V
		Iadj	Vadj = 0.5 V	-25			μA
		Iadj	Vadj = 5.0V			25	μA
5	Output Voltage	Vout	Vin= 12 V, Iout= 6.0 mA (1 Lamp) (REF,VALUE)		600		Vrms
6	Output Current (Each connector)	Iout(Min)	Vin= 12 V, Vadj = 5.0 V (1 Lamp) Ta= 25 °C , After running 30min.		0		mArms
		Iout(Max)	Vin= 12 V, Vadj = 0.5 V (1 Lamp) Ta= 25 °C , After running 30min.	6.1	6.5	6.8	mArms
7	Frequency	Freq	Normal Operation	50	55	60	KHz
8	Open Lamp Voltage	Vopen	No Load, Vin=12V , Ta=0°C	1700			Vrms
9	Efficiency	η	Vin=12V, Load=100kΩ	82			%
10	Striking	Tscp	Vin=12V, Vadj=0V	1		2	Sec

	time					
11	Current Balancing	± 0.5	(resistive load)	mArms		
12	Open Lamp Protection	Latched				
13	Short Lamp Protection	Latched				

Note 1: The kick – off voltage is tested under all lamps opened circuit.

3. Interface Specification

Input Connector : CON1 : FCN PJH2-40-0848 or equ.

Pin No.	Signal	Description
1,2,3	Vin	Input Voltage
4,5,6	GND	Power System Return
7	Vadj	Lamp Control
8	ON/OFF	ON / OFF Control

Output Connector : CN101,102,103,104,105 : FCN WH2-08540-0228or equ.

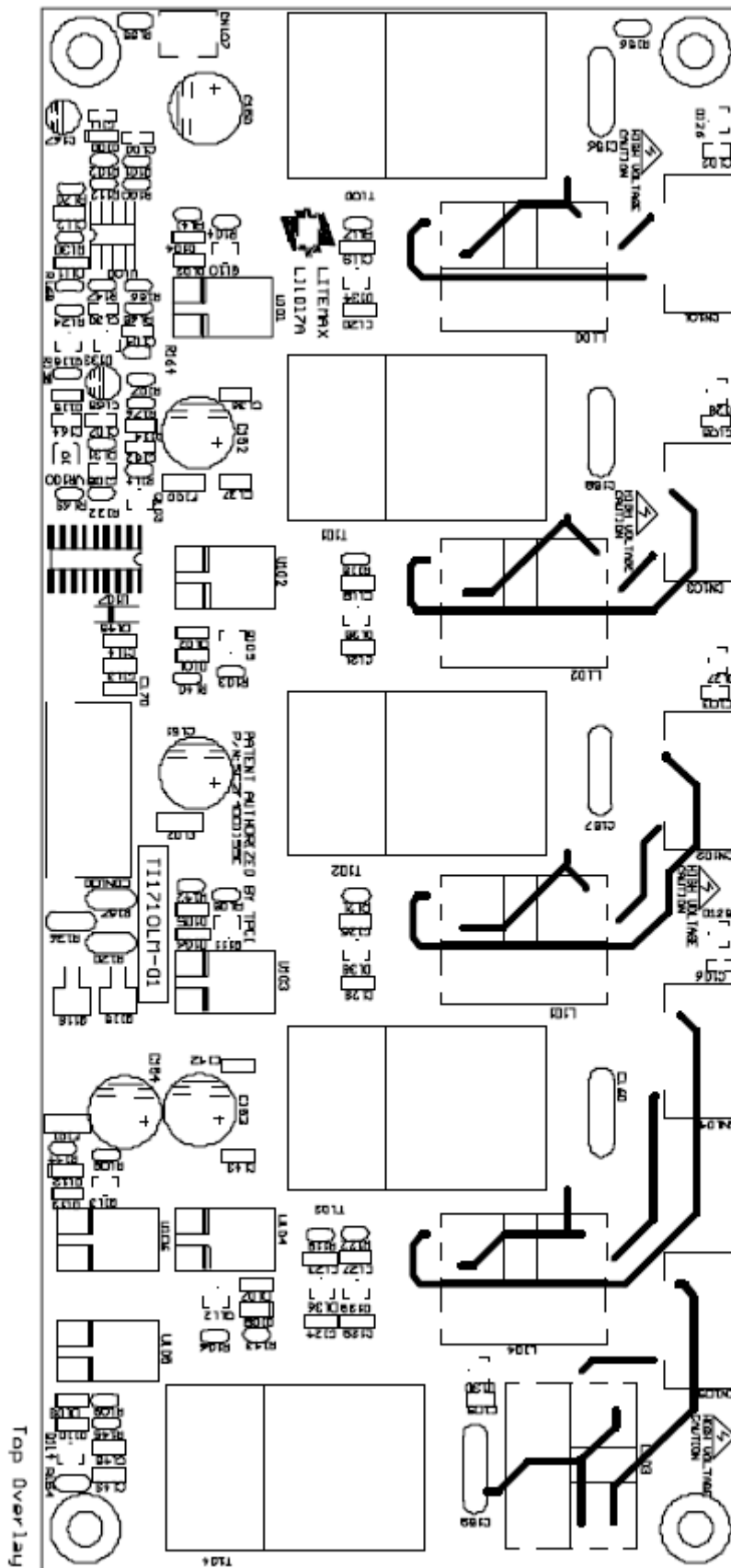
Pin No.	Signal	Description
1	Lamp High	High Voltage Output For High Side CCFL
3,4,5	N.C	N.C
2	Lamp Low	Low Voltage Output For Low Side CCFL

Output Connector : CN107 : UNE LM212-002-TX-1or equ.

Pin No.	Signal	Description
1	Lamp Low	Low Voltage Output For Low Side CCFL
2	Lamp Low	Low Voltage Output For Low Side CCFL

4. Environment

Operation Temperature	-10 ~ 60°C
Operation Humidity	90 % Max. RH
Storage Temperature	-10 ~ 85 °C
Storage Humidity	95 % Max. RH



TOLERANDE	
DIM	
X.	+/-0.5
X.X	+/-0.25
XoXX	+/-0.12
XoXXX	+/-0.08

