

# Platform Specifications



Platform

## Key Features

- Sunlight Readable
- Wide Viewing Angle
- High Contrast Ratio
- LVDS
- Long Lamp Life
- Fast Response Time
- Thin and Light



## SLO1541 (AUO M150XN07 V9)

<b>Model No.</b>	SLO1541
<b>LCD Display</b>	15" TFT LCD Module
<b>Display Area</b>	304.128 x 228.096 mm
<b>Brightness</b>	250 cd/m <sup>2</sup>
<b>Resolution</b>	1024x768 (XGA)
<b>Contrast Ratio</b>	700 : 1
<b>Pixel Pitch (mm)</b>	0.297(H) x 0.297(V)
<b>Viewing Angle</b>	+70° ~ -70° (H), +65° ~ -60° (V)
<b>Display Colors</b>	16.2M colors
<b>Response Time</b>	8ms (Typical)
<b>Sync</b>	LVDS
<b>Power Consumption</b>	28W
<b>Inverter</b>	LI 0215A
<b>Control Board (Optional)</b>	AD5621GA (Standard)
<b>F / R Control Button</b>	Power Switch, Menu, Select (+, -), Auto
<b>OSD Menu</b>	Brightness, Contrast, H/V Position, Color, Phase, Clock....
<b>Dimensions (WxHxD)</b>	402x314x46.3mm
<b>Weight</b>	3.42kgs
<b>Optional</b>	<input checked="" type="checkbox"/> AOT <input checked="" type="checkbox"/> Touch Screen

Specifications are subject to change without notice. All brands or product names are trademarks or registered trademarks of their respective companies.

<b>Control Board (Optional)</b>	AD5621GA/AD5621GD/AD5766GDVA/AD1501GDV
<input checked="" type="checkbox"/> <b>AD5621GA</b>	VGA+Audio
<input checked="" type="checkbox"/> <b>AD5621GD</b>	VGA+DVI
<input checked="" type="checkbox"/> <b>AD5766GDVA</b>	VGA+CVBS+S-Video+Audio (Optional DVI / Component)
<input checked="" type="checkbox"/> <b>AD1501GDV</b>	VGA+DVI+S-Video
<b>F / R Control Button</b>	5 Key / 4 Key (Optional)
<input checked="" type="checkbox"/> <b>5 Key</b>	Power Switch, Menu, Select (+, -), Auto
<input checked="" type="checkbox"/> <b>4 Key</b>	Power Switch, Menu, Select (+, -)

SLO= Open Frame  
SLD= Industrial Casing

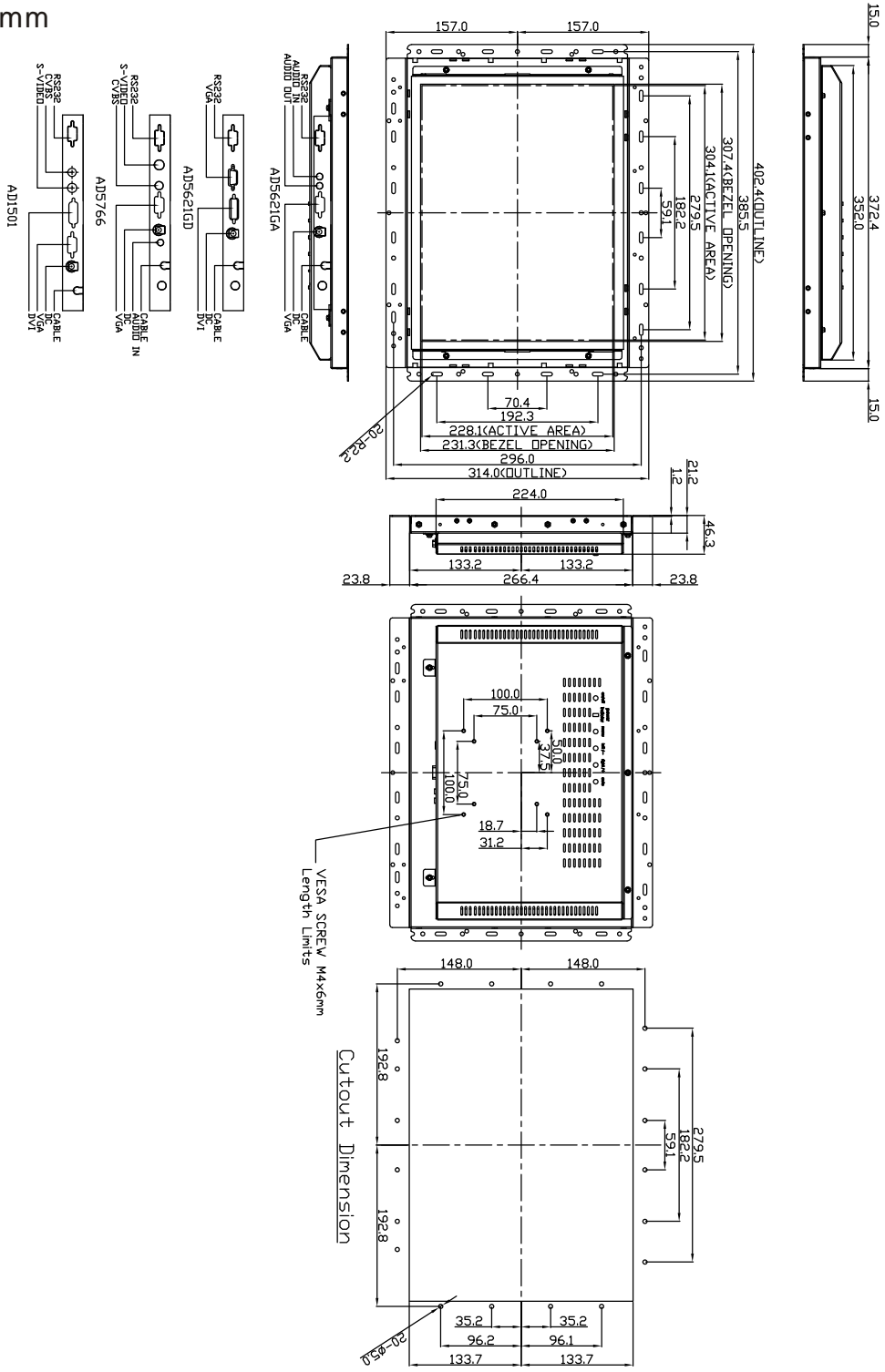


# Platform Specifications



Platform

## Outline Dimensions unit:mm



Note: 1. 4 different AD boards can be selectable.  
 2. Tempered glass and touch screen can be installed.