



LITEMAX LID19A01

LED Driving Board

(1st Edition 7/25/2008)

All information is subject to change without notice.

| Approved by | Checked by | Prepared by |
|-------------|------------|-------------|
| David | Ming | Eric |

LITEMAX Electronics Inc.
8F, No.137, Lane 235, Bau-chiau Rd.,
Shin-dian City, Taipei County, Taiwan R.O.C.
Tel : 886-2-8919-1858
Fax: 886-2-8919-1300
Homepage: <http://www.litemax.com.tw>

LITEMAX

1.適用LED (Application)

This specification is applied to LED converter unit for 19"96pcs LED backlight

2.電氣規格 (Operating Characteristics)

| Item | Symbol | Conditions | MIN. | TYP. | MAX. | Unit | Remark |
|------------------------------------|---------|-----------------------|-------|--------|--------|------|--------|
| Input Voltage | Vin | | 10.0 | 12.0 | 14.0 | V | |
| Input Current (Low Brightness) | IinL | VIN=12V,Vadj=5V | 0.0 | ----- | ----- | mA | |
| Input Current (High Brightness) | IinH | VIN=12V,Vadj=0V | 2.826 | 2.671 | 2.33 | A | |
| LED Current (Low Brightness) | IoutL | VIN=12V,Vadj=5V | 0.0 | ----- | ----- | Arms | |
| LED Current (High Brightness) | IoutH | VIN=12V,Vadj=0V | 1.5 | 1.729 | 1.732 | A | |
| Working Frequency | Freq | VIN=12V,Vadj=0V | 120 | 125 | 130 | KHZ | |
| PWM Frequency | Freq | VIN=12V | 180 | 200 | 220 | HZ | |
| Brightness Control | Vadj | Connection of Voltage | 0.5 | ----- | 4.8 | V | |
| ON/OFF Control | Von/off | Normal Operation | 2 | ----- | 5 | V | |
| Output Voltage | Vout | VIN=12V,Vadj=0V | 17.42 | 17.688 | 17.682 | V | |
| Efficiency | η | VIN=12V,Vadj=0V | 91.29 | 95.4 | 93.88 | % | |

3.環境狀況(Environment)

| | |
|-----------------------|------------|
| Operation Temperature | -20 ~ 70°C |
| Operation Humidity | % Max.RH |
| Storage Temperature | -40 ~ 85°C |
| Storage Humidity | % Max.RH |

LITEMAX

4. 連接插座 (Connector Socket)

4-1. Input Connector :J1(JST B2B-PH-K-S or Compatible)

:

| PIN No | Symbol | Description |
|--------|------------|-----------------------------------|
| 1 | Vin | DC+12V |
| 2 | Vin | DC+12V |
| 3 | Vin | DC+12V |
| 4 | GND | Ground |
| 5 | GND | Ground |
| 6 | GND | Ground |
| 7 | Brightness | Brightness Control 5V~0V |
| 8 | Control | ON/OFF Control 0.8V(OFF) 2~5V(ON) |

4-2 .Output Connector :J2,J3(JST S2B-EH or Compatible)

:

| PIN NO | Symbol | Description |
|--------|--------|-----------------------|
| 1 | Output | LED High Voltage(+) |
| 2 | Output | LED Low Voltage (-) |

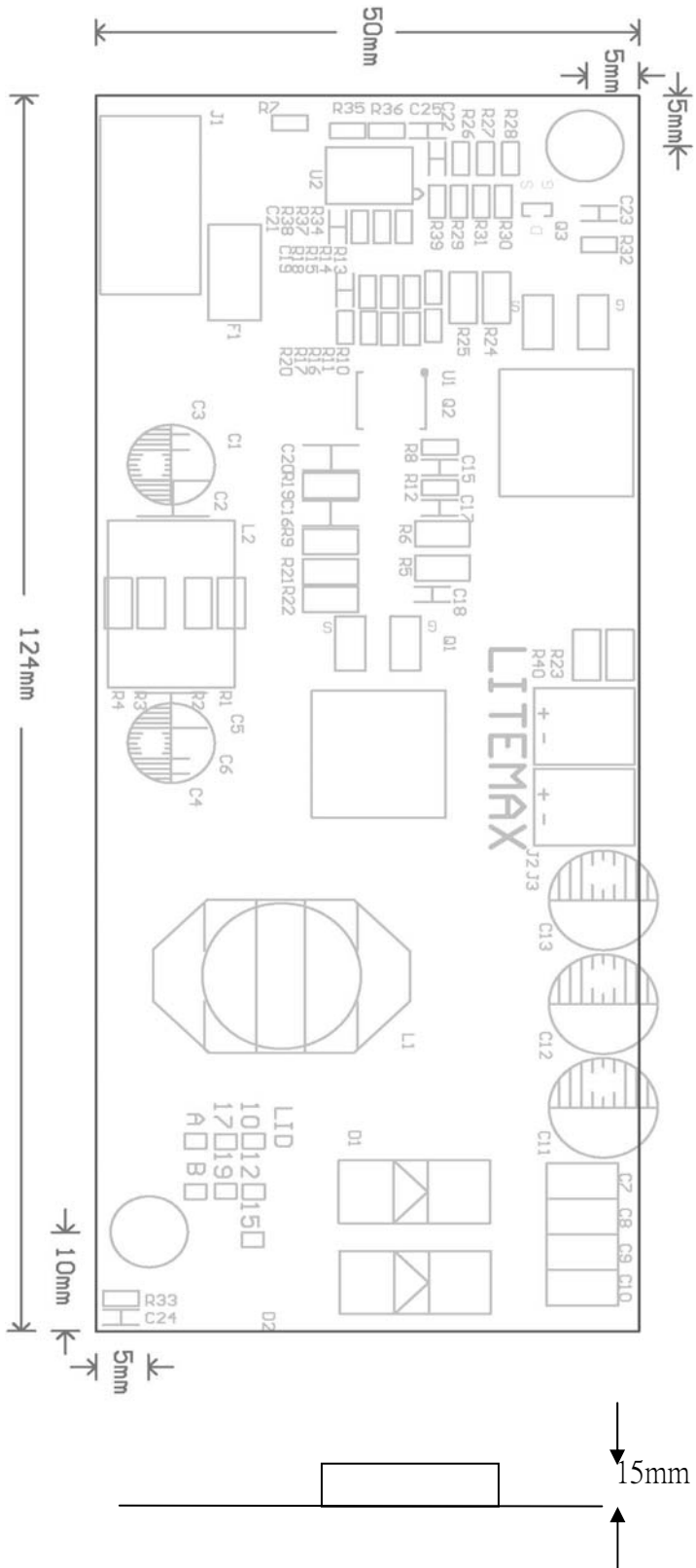
LITEMAX

5. Mechanical Characteristics

Dimension: 124mm*50mm*15mm

INPUT CONNECTOR
J1:

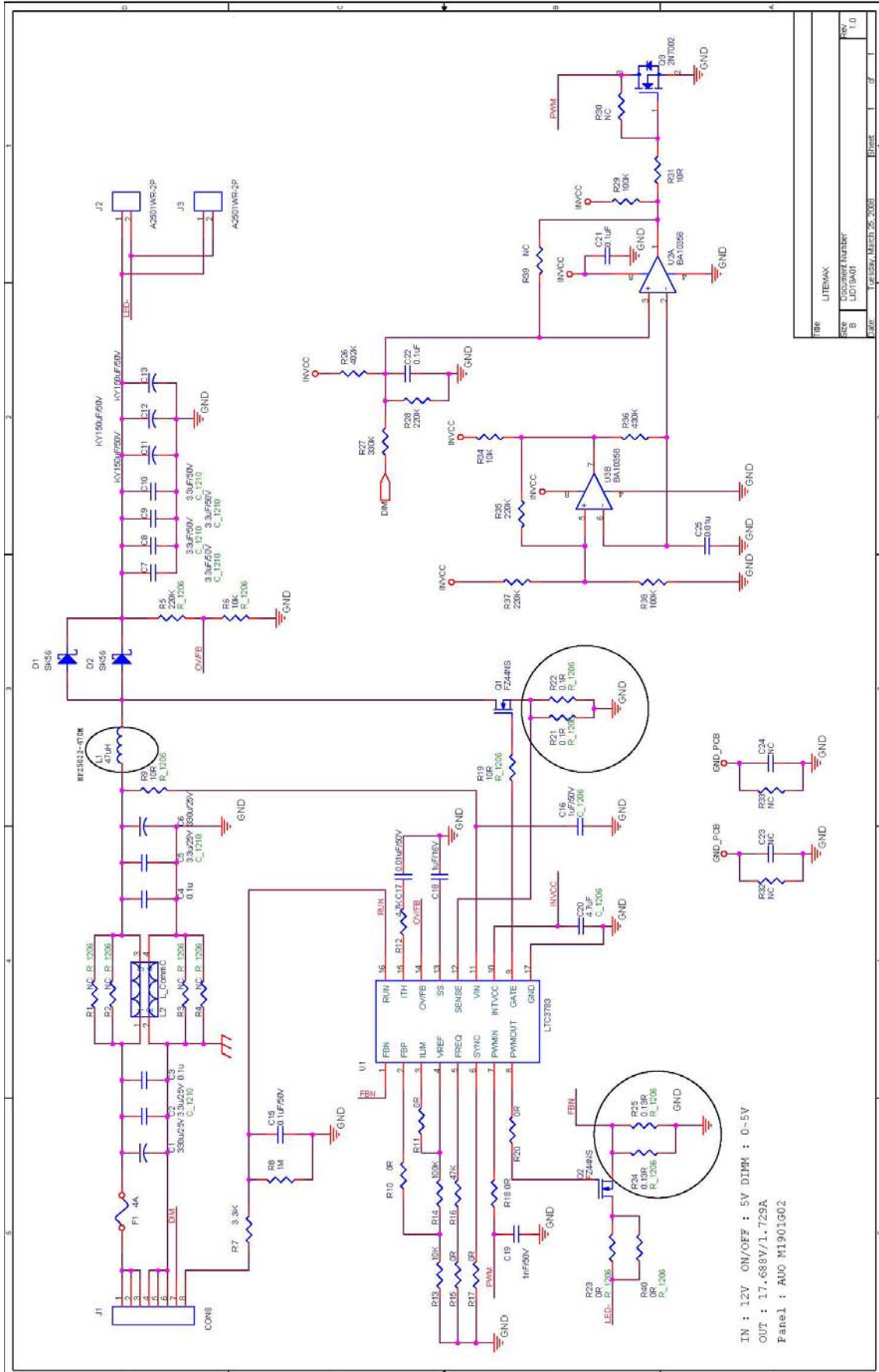
- PIN1:VIN**
- PIN2:VIN**
- PIN3:VIN**
- PIN4:GND**
- PIN5:GND**
- PIN6:GND**
- PIN7:BRIGHTNESS**
- PIN8:ON/OFF**



LITEMAX

6. Mechanical Characteristics

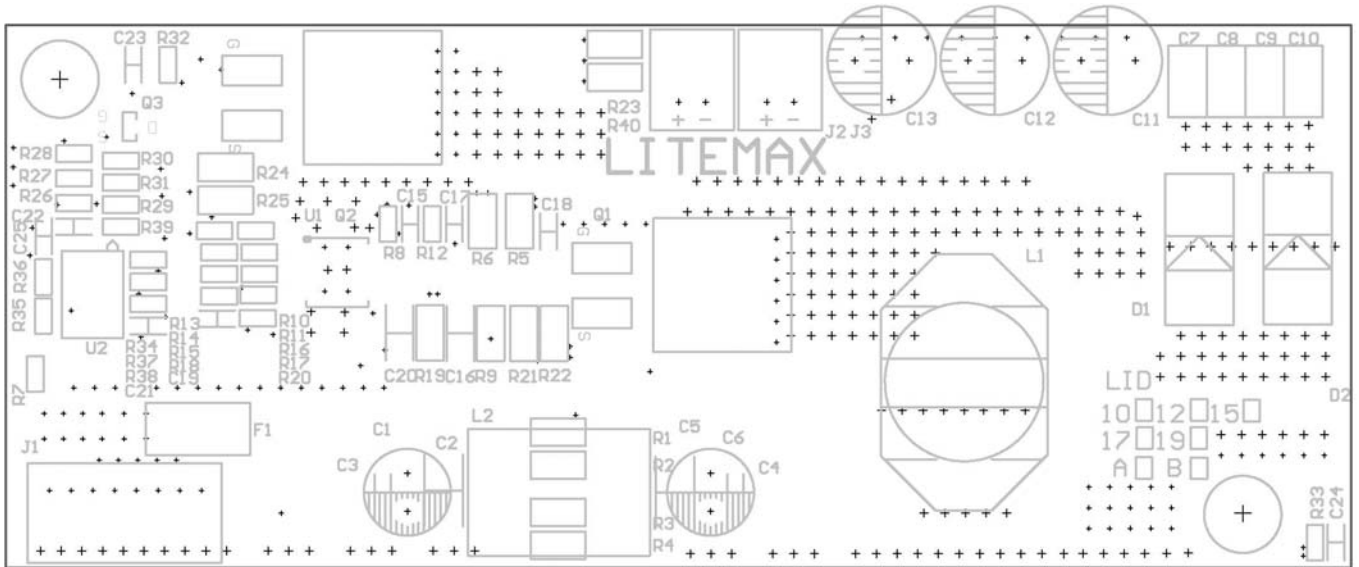
Design Circuit



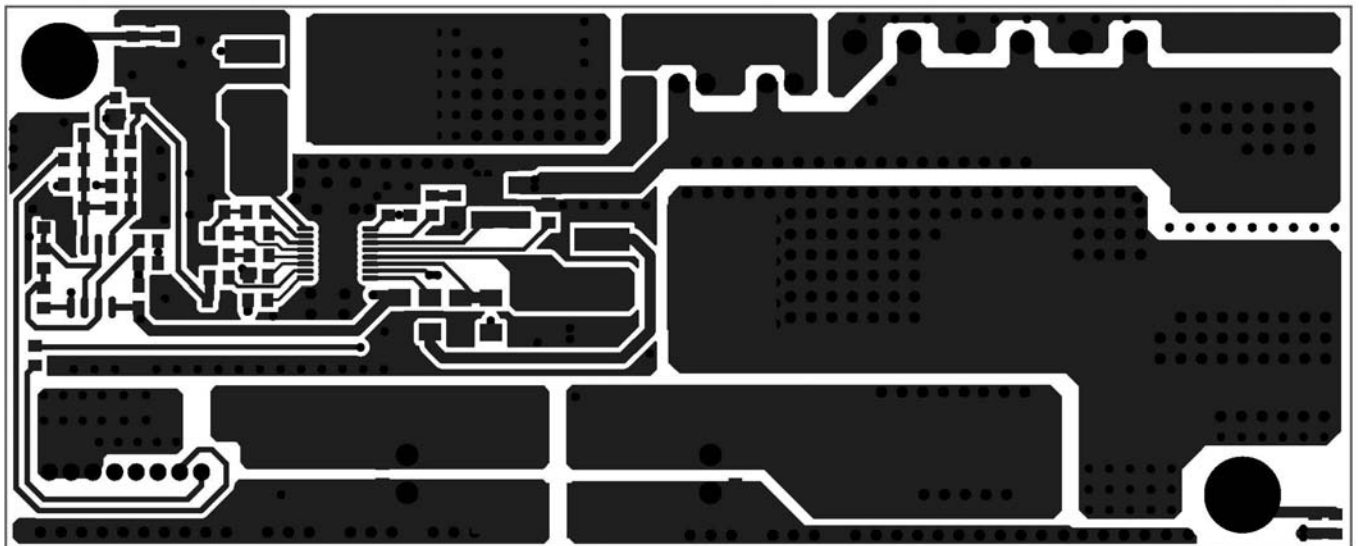
LITEMAX

7. PCB LAYOUT

7-1.TopOverlay

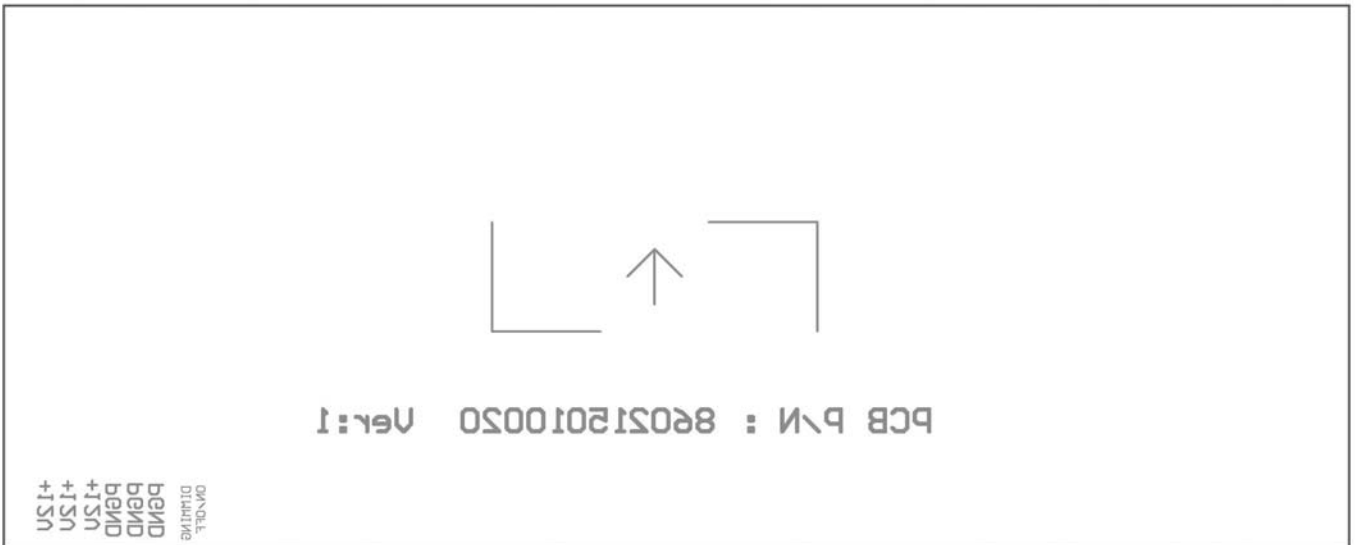


7-2.TopLayer



LITEMAX

7-3.BottomOverlay



7-4.BottomLayer

