



ABT™

CCFL Specifications

Key Features

- Sunlight Readable
- Wide Viewing Angle
- High Contrast Ratio
- LVDS
- Long Lamp Life
- Fast Response Time
- Thin and Light
- 12 CCFL



ALF/ALH1756 (CPT CLAA170EA07)

Model No.	ALF1756	ALH1756
LCD Display	17" TFT LCD Module	17" TFT LCD Module
Display Area	337.92 x 270.336 mm	337.92 x 270.336 mm
Brightness	1200 cd/m ²	1200 cd/m ²
Resolution	1280x1024 (SXGA)	1280x1024 (SXGA)
Contrast Ratio	700 : 1	700 : 1
Pixel Pitch (mm)	0.264(H) x 0.264(V)	0.264(H) x 0.264(V)
Viewing Angle	+80° ~ -80° (H), +80° ~ -80° (V)	+80° ~ -80° (H), +80° ~ -80° (V)
Display Colors	16.2M colors	16.2M colors
Response Time	5ms (Typical)	5ms (Typical)
Sync	LVDS	LVDS
Power Consumption	65W	70W
Inverter	LI 1217A	LI 1217A
Control Board (Optional)		AD5621GA (Standard)
F / R Control Button		Power Switch, Menu, Select (+,-), Auto
OSD Menu		Brightness, Contrast, H/V Position, Color, Phase, Clock....
Dimensions (WxHxD)	358.5x296.5x27mm	358.5x296.5x27mm
Weight	2630g	2730g
Optional	<input checked="" type="checkbox"/> Touch Screen	

Specifications are subject to change without notice. All brands or product names are trademarks or registered trademarks of their respective companies.

Control Board (Optional)	AD5621GA/AD5621GD/AD5766GDVA/AD1501GDV
<input checked="" type="checkbox"/> AD5621GA	VGA+Audio
<input checked="" type="checkbox"/> AD5621GD	VGA+DVI
<input checked="" type="checkbox"/> AD5766GDVA	VGA+CVBS+S-Video+Audio (Optional DVI / Component)
<input checked="" type="checkbox"/> AD1501GDV	VGA+DVI+S-Video
F / R Control Button	5 Key / 4 Key (Optional)
<input checked="" type="checkbox"/> 5 Key	Power Switch, Menu, Select (+,-), Auto
<input checked="" type="checkbox"/> 4 Key	Power Switch, Menu, Select (+,-)

ALF= Panel+Inverter

ALH= Panel+Inverter+Control Board

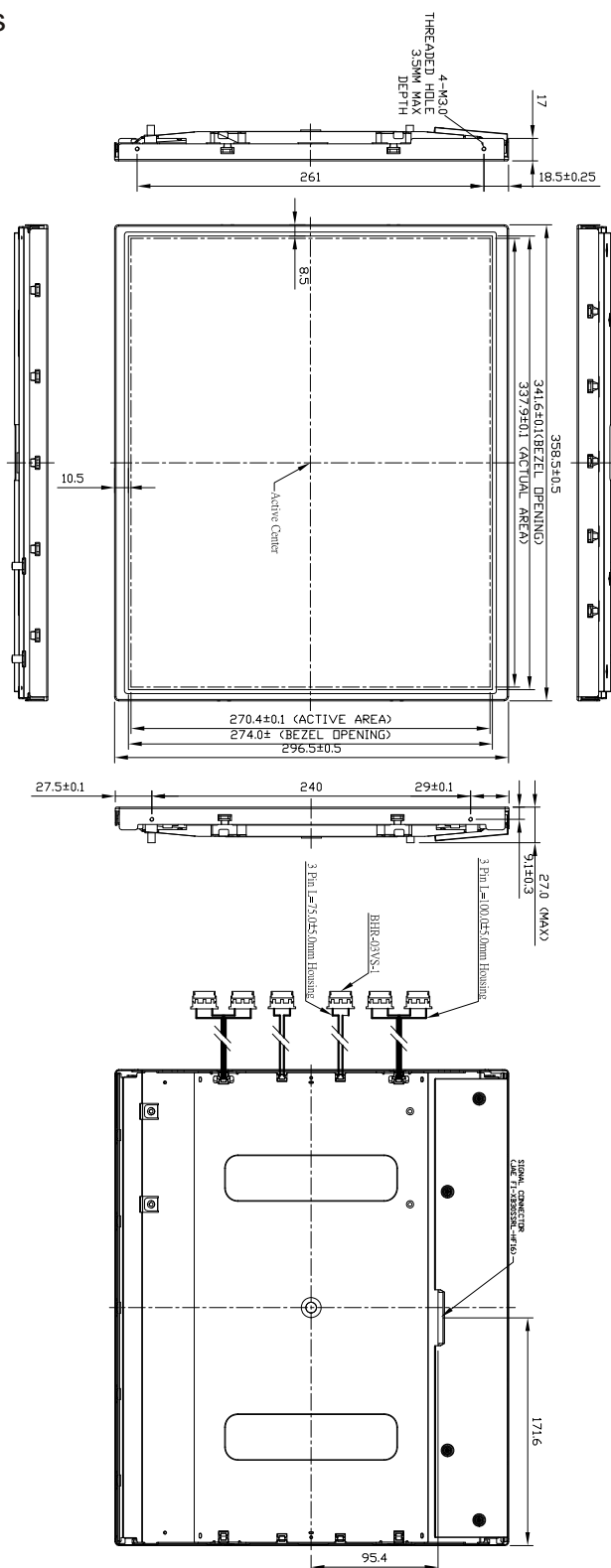


CCFL Specifications



ABT™

Outline Dimensions unit:mm



Note :

- 1.Outline Tolerance : 0.5mm
- 2.Lamp Connector : JST BHR-03VS-1
- 3.Lamp Cable : U13239 AWG22 L=100±5mm(Blue)
U13239 AWG22 L=75±5mm(Red)



Enrich your visual world....