

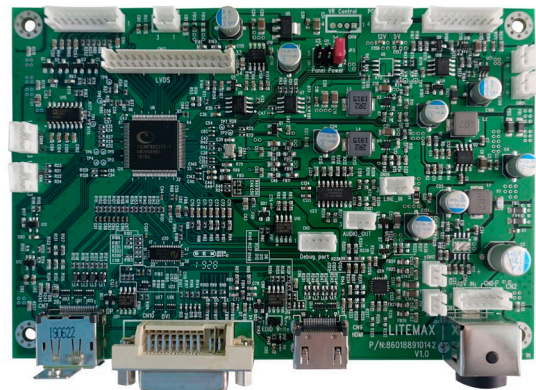
AD8891GDPH

Display Control Board, WUXGA

AD8891GDPH is a high integrated display controller solution for producing real time, top quality digital video and computer graphic images on LCD panel. The AD8891GDPH provides an ideal interface between industry standard digital graphics controllers and a wide variety of LCD panel devices. It has a display port and DVI-I, HDMI input.

Key Features

- Max Resolution Up To Full HD
- Analog RGB Input up to 205MHz
- ULTRA-RELIABLE DVI-I Input
- HDMI Input (HDMI1.3)
- Display Port Input
- Dual/Single LVDS interface
- Support Panel DC 3.3V/5V/12V Output
- OSD Control
- PWM/DC Dimming Control for Backlight Driver
- External RS232 Control (Optional)
- Input Power DC 24V or 12V (Optional)
- Display Port Input (support display port 1.2a)
- Audio in and 3Wx2(4Ω)Audio Out (Optional)
- *External Digital Light Sensor Brightness Control (Optional)
- *External Light Sensor Brightness Control (Optional)
- Support Output Voltage 12V(1A) and 5V(1A)



Specifications

V1

Model No.	AD8891GDPH
Max. Resolution	WUXGA (1920X1200)
Interface	Single/Dual LVDS
Input Power	DC 12V/24V (Optional)
Panel Power Selection	3.3V, 5V,12V
Video Input	DVI-I, HDMI, Display Port
Light Sensor	Yes (Optional)
RS232 Control Port	Yes (Optional)
IR	Yes (Optional)
External VR Control	Yes (Optional)
Speaker	3W x2
Board Dimension	150 x 100 mm
F / R Control Button	<input type="checkbox"/> 4 Key
<input type="checkbox"/> 4 Key	Power Switch, Menu, Select (+,-)
OSD Menu	Brightness, Color, Contrast, Auto Turing, H/V Position...etc
Operating Temperature	-30 °C ~ 85 °C
Storage Temperature	-30 °C ~ 85 °C

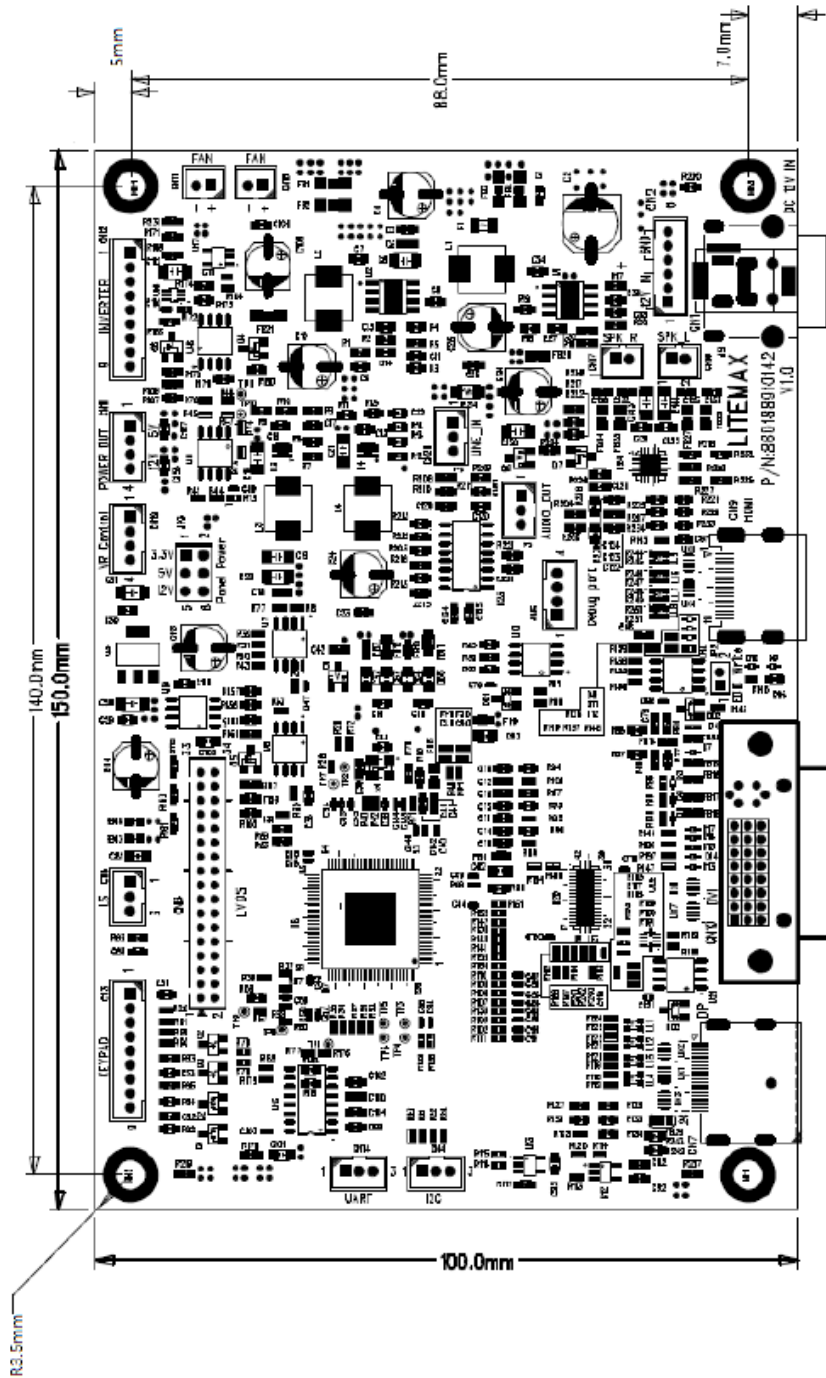
Specifications are subject to change without notice.

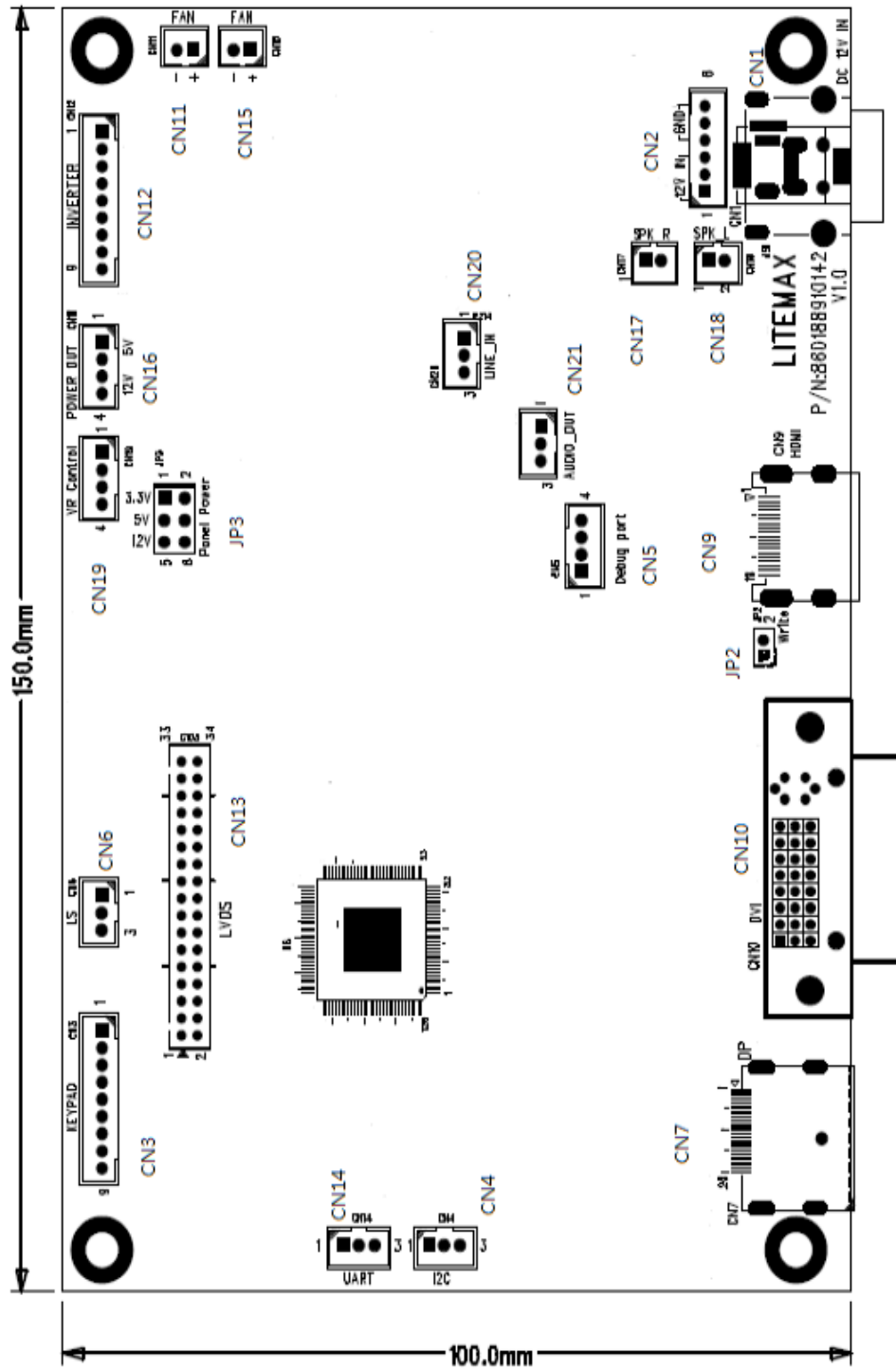
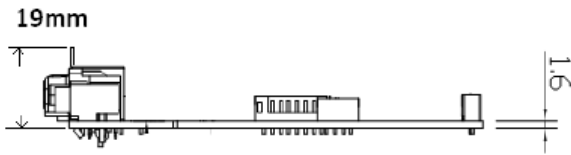
All brands or product names are trademarks or registered trademarks of their respective companies.

Outline Dimensions

Unit:mm

AD8891GDPH 150mmx100mm







Ordering Information

Part Number	Description
880188911010	PCBA,AD,AD8891GDPH,V1,12V IN,POWER DIN,PWM&DC ADJ,R
880188911012	PCBA,AD,AD8891GDPH,V1,24V IN,POWER DIN,PWM&DC ADJ,R

Optional Accessories

Part Number	Description
800807604000	CABLE,OTHER,LS,760mm,26AWG,2.0mm 2P,LS3505-HC4,SA-57S A&B,BLE-L-308-N,AD2662, R
800805504000	CABLE,OTHER,DLS,550mm.26AWG,1.25mm 5P TO 2.0mm 2P/3P,R