

NPD2118

21.5" IP65 Sunlight Readable Marine Display

NAVPIXEL NPD2118, the high-performance, rugged monitor, is specially engineered to survive from the most demanding working environment. Housed in a milled billet aluminum case, the slim-profile NAVPIXEL NPD2118 is light weight and watertight. The front-mounted sunlight readable screen makes the industrial rugged monitor vividly and user-friendly. In addition, the high power efficiency and low heat design guarantee the stability and longevity required for mission critical deployment.

Features

- 1600 nits Sunlight Readable LCD
- Long Life, Low Power Consumption LED Backlight
- Wide Operating Temperature
- Picture In Picture Function
- Advanced Optical Bonding (AOT)
- High Shock & Vibration Resistance
- IP65 Facial Waterproof
- Isolation Power 9-36V DC Input

Application

- Marine



Specifications

V1

Model Number	NPD2118
Description	21.5" IP65 Sunlight Readable Marine Display
Backlight	LED Backlight
Active Display Area	477.7 x 269.1mm
Brightness	1600 cd/m ²
Resolution	1920x1080 (FHD)
Contrast Ratio	1100:1
Pixel Pitch (mm)	0.248(H) x 0.248 (V)
Viewing Angle	170 (H), 160(V)
Display Color	16.7M
Response Time	5ms
Inputs	VGaX2, DVlX2, Compositex3, RS232x1, USBx1
PIP Support	3 Stages (child, split & wide screen)
Mechanical	
IP Rating	Facial waterproof to IP65 standards when console mounted.
Construction	Rugged Aluminum Alloy Chassis
Mounting	Panel (Flush) mount, VESA mount
Dimension (mm)	557.6(W) x 383.2(H) x 56.9(D)
Net Weight	6kg
Power	
Voltage	DC Input Voltage: DC 9~36V
Power Consumption	47W
Environmental	
Operating Temperature	-10°C~50°C
Non-Operating Temperature	-20°C~70°C
Certification	Designed to meet CE / FCC Class A
Marine Type Approval	Designed to meet CE/FCC & BV Marine Approval Pending

Specifications are subject to change without notice.

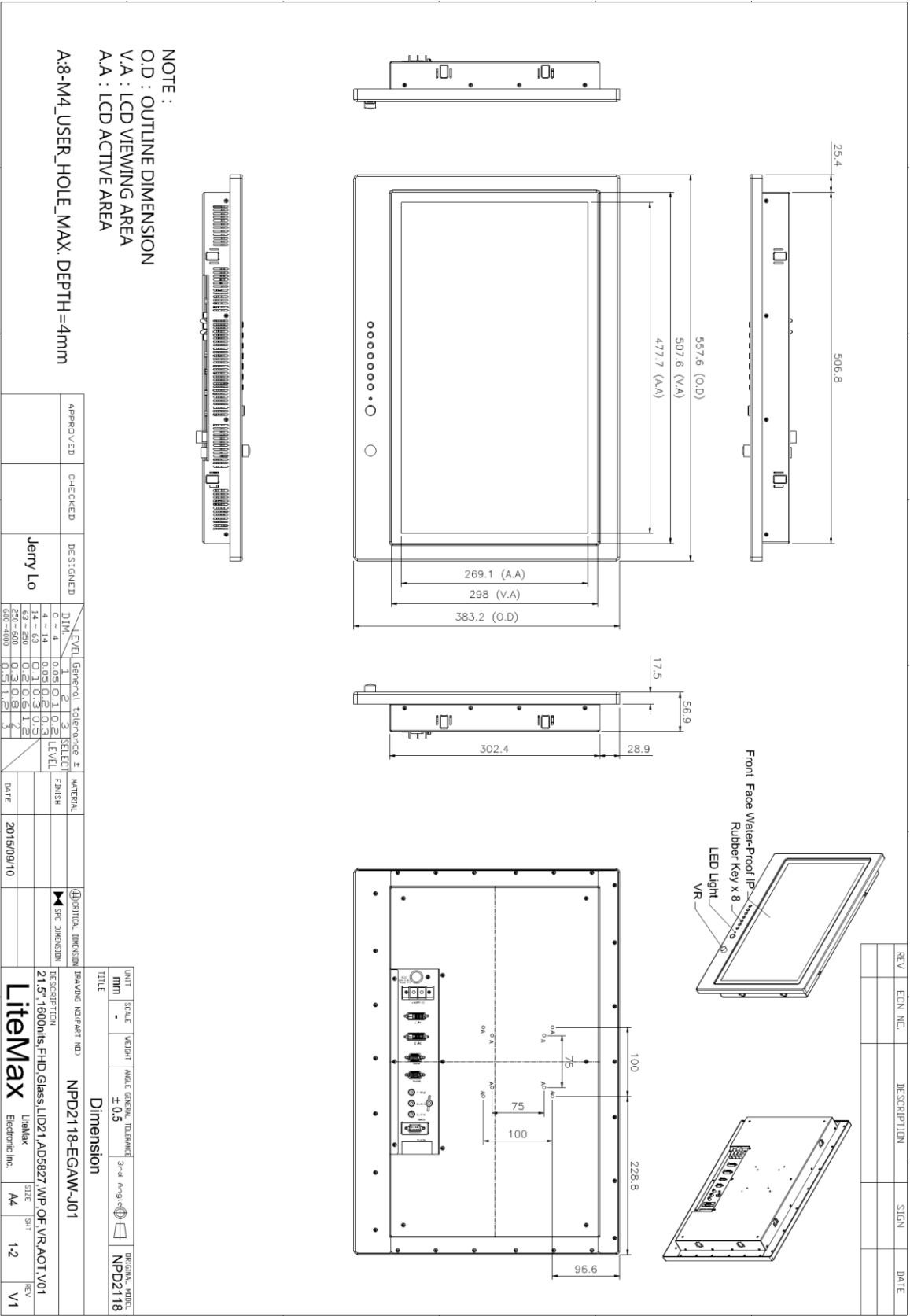
All brands or product names are trademarks or registered trademarks of their respective companies.



Mechanical Drawing

Outline Dimensions

Unit:mm





Ordering Information

Part Number	Description
NPD2118-EGAW-J01	21.5",1600nits,FHD,Glass.LID21,AD5827,WP,O/F,VR,AOT.V01
NPD2118-EGAW-J011	21.5",1600nits,FHD,Glass.LID21,AD5827,WP,O/F,VR,AOT.with adaptor,V01

Optional Accessories

Part Number	Description
810650005110	CABLE,POWER,DC,5000mm,TER.MINAL TO OPEN,14AWG*2C+BRA.ID,COOL GRAY 7C PVC JACKET,P
810130001000	CABLE.VGA.3000mm.D-SUB15P MALE.BLUE TO D-SUB 15P MALE BLUE.BLACK.P
321189155501	Print,Menu,User,NPD.1555,V0,series,P
321179211801	Print,Menu,Install,NPD,2118,V0.Flush mount template,P
112615315401 x (4)	Metal,SPCC,NPS,1531,Lock,V0,P
214032121101 x (4)	Screw,M4,32mm,Round,Ni,P
460100002101 x (4)	Fixture,other,MP-4,V0,P
980000560010 (Optional)	SET,OTHER,ADAPTER REWORK.60W KPA-060F WITH Y TYPE.TERMINAL,P
810618301010 (Optional)	CABLE.POWER.AC.1830mm USA type
810618301090 (Optional)	CABLE,POWER,AC,1830mm Europe type
810618301050 (Optional)	CABLE.POWER.AC.1830mm UK type
810618301170 (Optional)	CABLE.POWER,AC,1830mm Australia type
810618301031 (Optional)	CABLE.POWER.AC.1830mm Japan type