

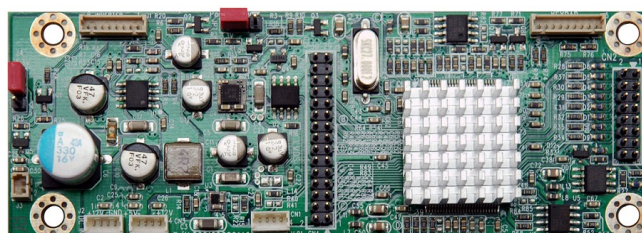
AD6038DM

Display Control Board, WUXGA

AD6038DM is a high integrated display controller solution for producing real time, top quality digital video and computer graphic images on LCD panel. The AD6038DM provides an ideal interface between industry standard digital graphics controllers and a wide variety of LCD panel devices. It has a display port and DVI-D input. Rev.1 is European RoHS compliant., resolution can support all coming VESA modes and up to WUXGA (1920x1200)

Key Features

- Maximum resolution WUXGA (1920x1200)
- Support dual pixel (48bits) LVDS and single pixel (24bits) LVDS
- Support refresh rate up to 75Hz, compatibility with standard VESA specification
- Support non-linear scaling from 4:3 to 16:9 or 16:9 to 4:3
- High resolution PWM dimming control output
- Provide one VR connector for external dimming control
- Provide IR remote control function



Specifications

V1

Model No.	AD6038DM
Chip	St6038
Max. Resolution	WUXGA (1920x1200)
Interface	Single (24bits) / Dual (48bits) LVDS
Input Power	DC 12V
Panel Power Selection	3.3V, 5V
Video Input	DVI
Light Sensor	Yes
External VR Control	Yes
Board Dimension	113 x 40 mm
F / R Control Button	<input type="checkbox"/> 5 Key <input type="checkbox"/> 4 Key
<input type="checkbox"/> 5 Key	Power Switch, Menu, Select (+,-), Auto
<input type="checkbox"/> 4 Key	Power Switch, Menu, Select (+,-),
OSD Menu	Brightness, Contrast, H/V Position, Color, Phase, Clock...

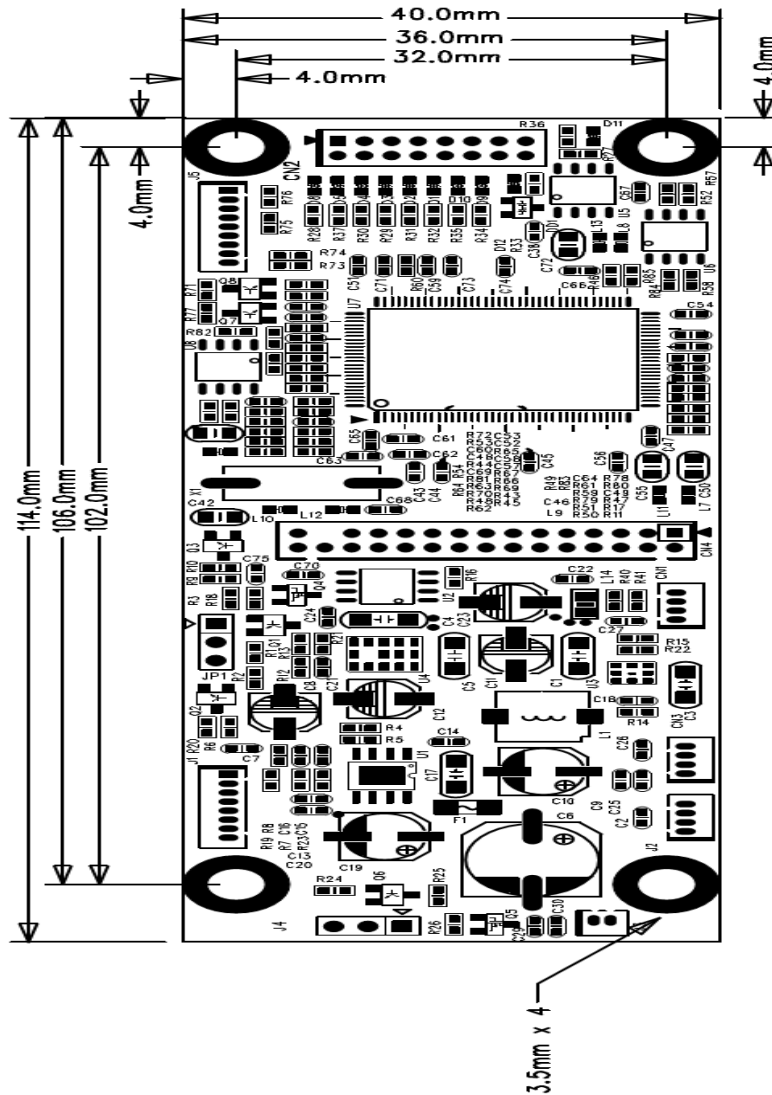
Specifications are subject to change without notice.

All brands or product names are trademarks or registered trademarks of their respective companies.

Outline Dimensions

Unit:mm

AD6038DM



Ordering Information

Part Number	Description
AD6038DM: 880160381019	PCBA,AD,AD6038DM,V1.0,P

Optional Accessories

Part Number	Description
980000020011	SET,OTHER,LIGHTSENSOR.(LS3101)WITH CABLE,L=760mm.AD2662,3M DP270,P
980000040010	VR with cable

