



## IPPC-5500-AML0-WG00-1001

### 55" TFT LCD, LED Backlight 2500nits, FHD(1920x1080)

The IPPC-5500-AML0-WG00-1001 is 2500nits high-brightness display ensures clear visibility in direct sunlight, making it ideal for outdoor and industrial applications. Featuring 5mm AG UV/IR tempered glass, IP56/IK10 durability, and low power consumption, it offers reliability in harsh environments. Auto-dimming, IR remote control, and LCD Blanking Defect Free (H-Tni 110°C) technology enhance performance, while the 100,000-hour backlight MTBF ensures longevity. With a slim bezel design, it delivers both durability and a sleek, modern look.

#### Key Features

- High Brightness: 2500nits (min)
- Sunlight Readable
- Low Power Consumption
- 5mm AG UV/IR Tampered Glass
- Full IP56 / IK10
- Auto Dimming / IR-Remote
- LCD Blanking Defect Free (H-Tni 110°C)
- Slim Bezel
- BL MTBF: 100,000 hours



### Specifications

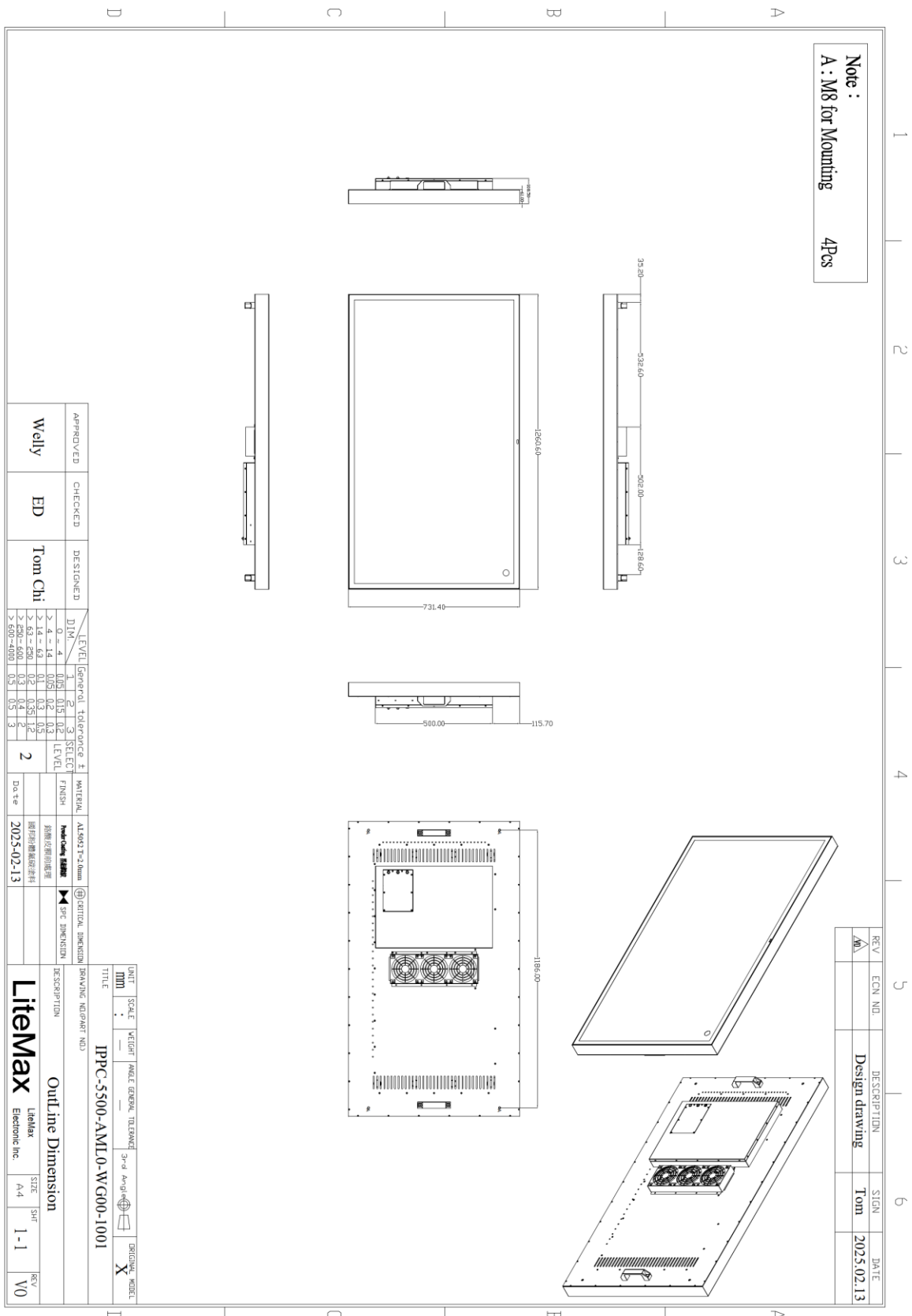
<b>Model Name</b>	<b>IPPC-5500-AML0-WG00-1001</b>
<b>Description</b>	55" TFT LCD, LED Backlight 2500 nits, FHD (1920x1080)
<b>Screen Size</b>	55"
<b>Display Area (mm)</b>	1209.6(H) x 680.4(V)
<b>Brightness</b>	2500 cd/m <sup>2</sup> (min.)
<b>Resolution</b>	1920 x 1080
<b>Aspect Ratio</b>	16 : 9
<b>Contrast Ratio</b>	1500 : 1
<b>Pixel Pitch (mm)</b>	0.63(H) x 0.63(V)
<b>Viewing Angle</b>	178°(H),178°(V)
<b>Color Saturation (NTSC)</b>	80%
<b>Display Colors</b>	16.7M
<b>Response Time (Typical)</b>	9ms
<b>Glass</b>	5mm AG UV/IR Tampered Glass
<b>IK Level</b>	IK10
<b>IP Level</b>	IP56
<b>CPU</b>	AML T982 , Quad-Core ARM Cortex-A55
<b>RAM</b>	DDR4 4GB
<b>Storage</b>	eMMC 32GB
<b>Interface</b>	RJ45x1 、HDMI in x 2 、USB3.0x1 、USB2.0x1
<b>OS</b>	Android 14.0 ( Android Open Source Project)
<b>Power input</b>	AC 100~240V
<b>Power Consumption</b>	300W (typ.)
<b>Dimensions (mm)</b>	1260.6 x 731.4 x 108
<b>Weight (Net)</b>	58 kg (est.)
<b>Operating Temperature</b>	-30 °C ~ 50 °C
<b>Storage Temperature</b>	-40 °C ~ 70 °C

*Specifications are subject to change without notice.*



All brands or product names are trademarks or registered trademarks of their respective companies.

## Mechanical Drawing





### Ordering Information

Part Number	Description
<b><u>IPPC-5500-AML0-WG00-1001</u></b>	55", 2500nits, 1920x1080, LID55A, w/5mm AG Glass, AML T982, 4GB/32GB eMMC, w/IR Remote, Self Check Board. Full IP56. Light Sensor, AC100~240V

### Optional Accessories

Part Number	Description

### Customer request
